

DELHI TRANSCO LTD.

STATE LOAD DISPATCH CENTER

PROGRESS REPORT

AUGUST 2013

S. No.	CONTENTS	Page No.
1.	Salient Features of Delhi Power System	3
2.	Performance of Generating Stations within Delhi	4
3.	Details of Outage of Generating Stations within Delhi	5-18
4.	Allocation of Power to Delhi from unallocated quota of central sector	19-20
5.	Allocation of Power to Discoms	21-22
6.	Power Availability Demand Position of Delhi at the time of occurrence of Peak Demand	23
7.	Power Availability Demand Position of Delhi at the time of occurrence of Maximum Un-Restricted Demand	24
8.	Source wise scheduled drawl from grid and Availability within Delhi	25-27
9.	Shedding Details	28-31
10.	Load Curve for the Day of Peak Demand	32
11.	Load Curve for the day of occurrence of Maximum Un-Restricted Demand	33
12.	Load Curve for the day of Maximum Energy Consumed	34
13.	Load Curve for the day of Maximum Un-Restricted Energy Demand	35
14.	Load Duration Curve	36
15.	Frequency Analysis	37
16.	Voltage Profile for significant 220kV Sub-Stations	38
17.	Voltage Profile for significant 400kV Sub-Stations	39-40
18.	Details of Capacitors Installations in Delhi	41-46
19.	Tripping Details of 400/220 KV System in Delhi Power System	47-49
20.	Details of Under frequency Relay operations in Delhi Power System	50

SALIENT FEATURES OF DELHI POWER SYSTEM

Sr. No.	Features	AUGUST 2013	AUGUST 2012
1	Effective Generation Capacity within Delhi in MW		
	Rajghat Power House	135	135
	Gas Turbine	270	270
	Pragati Power Corporation Ltd.	330	330
	Badapur Thermal Power Station	705	705
	Rithala GT	108	108
	Bawana	685	685
	TOWMCL	16	0
	Total	2249	2233
2	Maximum Unrestricted Demand (MW)	4993	4661
	Date	26.08.2013	03.08.2012
	Time	15.46.11	15.20.35
3	Peak Demand met (MW)	4988	4652
	Date	26.08.2013	03.08.2012
	Time	15.46.11	15.20.35
4	Peak Availability (MW)	4662	4200
5	Shortage (-) / Surplus (+) in MW	(-)326	(-) 452
6	Percentage Shortage (-) / Surplus (+)	(-) 6.54	(-) 9.72
7	Maximum Energy Consume in a day (Mus)	96.289	92.784
8	Energy Consumed during the month	2655.918	2540.839
9	Load Shedding in Mus		
A)	Due to Grid Restrictions		
i)	Under Frequency Relay Operations	0.008	0.007
ii)	Manual Load shedding from DTL S/Stns.	0.000	0.000
iii)	Load Shedding due to low frequency / Low Voltage / TTC/ATC Violation		
	NDPL	0.064	0.641
	BRPL	0.686	0.407
	BYPL	0.210	0.385
	NDMC	0.000	0.000
	MES	0.000	0.000
iv)	Due to transmission Constraints in Central Sector	0.000	0.796
	Total due to Grid Restriction	0.968	2.236
B)	Due to Constraints in System in Mus		
	DTL	1.982	0.696
	NDPL	0.102	0.774
	BRPL	1.114	0.803
	BYPL	0.115	0.438
	NDMC	0.003	0.000
	MES	0.000	0.000
	Other Agencies	0.011	0.002
	Total	3.327	2.703
11	Grand Total in Mus	4.295	4.939

2. PERFORMANCE OF GENERATING STATIONS WITHIN DELHI DURING AUGUST 2013

A) For the month of August 2013

All Figures in MUs

S. No	Stations	Gross Generation	Aux. Consumption	Net Generation	Availability (%)	Backing Down
1.	RPH	40.493	6.593	33.900	60.48	17.561
2.	GT	73.682	2.456	71.226	90.05	103.635
3.	PPCL	201.589	5.348	196.241	95.37	31.557
4.	BTPS	347.929	35.051	314.869	97.32	145.607
5.	Rithala	0.000	0.108	-0.108	89.17	61.008
6.	Bawana	112.792	4.406	108.386	99.64	38.87
7.	Towmcl	11.649	1.851	9.798	--	--
	TOTAL	788.134	55.813	734.312	--	398.238

B) For the Year 2013-14 (Upto Aug. 2013)

Power Station	Effective Capacity (MW)	Net Generation in MUs for Aug. 2013	Availability (%) for Aug. 2013	PLF (%) for Aug. 2013	Cumulative Generation in MUs upto Aug. 2013 for the year 2013-14	Cumulative Availability in % upto Aug. 2013 for the year 2013-14	Cumulative PLF in % upto Aug. 2013 for the year 2013-14
RPH	135	33.900	60.48	40.77	229.773	59.70	53.46
GT	270	71.226	90.05	36.87	484.552	88.50	50.80
PPCL	330	196.241	95.37	82.12	977.668	90.12	82.96
BTPS	705	314.869	97.32	66.13	1767.977	96.91	75.93
Rithala	108	-0.108	89.17	0	-0.438	88.59	0.09
Bawana	685.6	108.386	99.64	21.87	445.042	80.72	18.20
Towmcl	16	9.798	--	--	36.453	--	--
TOTAL	2241	734.312	--	--	3941.027	--	--

3
(A)

**DETAILS OF OUTAGES OF GENERATING STNS. WITHIN DELHI W.E.F. APRIL 2012
RPH STATION**

Unit No	Capacity in MW	Outage		Synchronization		Reason of Outage
		Date	Time	Date	Time	
1	67.5	03.04.13	18.35	03.04.13	19.45	Unit tripped due to drum level very low.
		04.04.13	08.55	04.04.13	09.45	Unit tripped due to drum level low.
		14.04.13	10.20	14.04.13	15.40	Unit desynchronised to attend the CW line leakage.
		19.04.13	08.25	19.04.13	16.40	Unit desynchronised to attend the Boiler window repairing.
		19.04.13	17.00	19.04.13	17.30	Unit tripped due to bay no. 20 tripped.
		03.05.13	20.00	05.05.13	03.30	Unit desynchronised to attend the Boiler tube leakage.
		05.05.13	11.40	05.05.13	13.40	Unit tripped due to drum level low.
		05.05.13	15.55	05.05.13	20.15	Dark out due to Reactor on bay no. 9 had been blasted.
		19.05.13	07.10	24.05.13	04.40	Unit desynchronised due to shortage of coal fuel and to attend the CW line leakage.
		25.05.13	01.50	25.05.13	03.20	Unit tripped due to Furnace pr. very high.
		01.06.13	12.40	01.06.13	13.55	Unit tripped due to drum level low.
		02.06.13	11.55	02.06.13	13.05	Unit tripped due to Furnace pr. very high.
		06.06.13	17.10	06.06.13	20.05	Dark out due to 22K 9F, unit tripped.
		16.06.13	18.35	19.06.13	13.50	Unit desynchronised as per system operation.
		21.06.13	22.50	24.06.13	14.50	Unit desynchronised to attend the Boiler tube leakage.
		02.07.13	12.55	02.07.13	14.25	Dark out due to grid disturbance.
		09.07.13	23.30	10.07.13	00.25	Unit tripped due to flame failure.
		10.07.13	00.40	10.07.13	03.40	Unit tripped due to ST-1 trip.
		10.07.13	04.10	10.07.13	04.35	Unit tripped due to furnace pressure high.
		10.07.13	04.40	15.07.13	12.05	Unit tripped due to furnace pressure high (suspected boiler tube leakage).
		16.07.13	11.00	22.07.13	00.05	Unit tripped due to furnace pressure very high.
		22.07.13	03.55	22.07.13	04.25	
		22.07.13	10.45	22.07.13	12.00	Dark out due to 220kv supply failure.
		23.07.13	19.15	01.08.13	23.00	Unit tripped on furnace pressure very high due to boiler tube leakage.
		02.08.13	10.00	02.08.13	10.50	Unit tripped due to flame failure
		03.08.13	10.55	03.08.13	12.35	Dark out due to grid disturbance
		03.08.13	12.45	03.08.13	13.05	Unit tripped due to drum level low
		03.08.13	13.15	03.08.13	13.45	Unit tripped due to turbine trip
		07.08.13	19.35	07.08.13	20.55	Unit tripped due to flame failure
		07.08.13	21.05	07.08.13	22.25	Unit tripped due to drum level very low
		08.08.13	08.05	16.08.13	17.40	Stopped due to low demand and high frequency
		21.08.13	06.55	21.08.13	08.35	Unit tripped due to turbine trip
22.08.13	02.15	22.08.13	03.00	Unit tripped on furnace pressure very high		
22.08.13	22.00	27.08.13	17.40	Unit tripped due to heavy steam leakage from turbine control valve		

Unit No	Capacity in MW	Outage		Synchronization		Reason of Outage
		Date	Time	Date	Time	
2	67.5	03.04.13	04.10	03.04.13	05.35	Unit tripped due to turbine trip.
		05.04.13	20.00	06.04.13	04.05	Unit desynchronised to attend the economiser tube leakage.
		14.04.13	10.10	14.04.13	18.15	Unit desynchronised to attend the CW line leakage.
		04.05.13	09.20	06.05.13	03.25	Unit desynchronised to attend the Economiser tube leakage.
		11.05.13	17.15	11.05.13	18.00	Unit tripped due to turbine trip.
		11.05.13	23.20	11.05.13	23.45	
		19.05.13	07.15	19.05.13	20.55	Unit desynchronised to attend the CW line leakage.
		24.05.13	05.50	01.06.13	00.25	Unit desynchronised due to shortage of coal fuel.
		01.06.13	19.20	07.06.13	14.20	Unit tripped due to Boiler tube leakage.
		11.06.13	07.15	11.06.13	08.30	Unit tripped due to birdage, bay No. 1 to 9 tripped.
		18.06.13	14.20	18.06.13	15.00	Unit tripped due to turbine trip.
		02.07.13	12.55	02.07.13	14.10	Dark out due to grid disturbance.
		02.07.13	23.55	03.07.13	00.55	Unit tripped due to loss of fuel.
		10.07.13	00.45	10.07.13	02.00	Unit tripped due to emergency board supply failure.
		10.07.13	10.45	10.07.13	11.55	Unit tripped due to furnace pressure very high.
		10.07.13	13.50	10.07.13	17.10	Unit desynchronised due to furnace pressure hunting.
		11.07.13	09.20	12.07.13	19.25	Unit desynchronised, furnace disturbance due to wet coal.
		14.07.13	15.35	14.07.13	16.10	Unit tripped due to furnace pressure very high.
		15.07.13	03.45	15.07.13	04.45	Unit tripped due to furnace pressure high.
		19.07.13	07.50	19.07.13	08.20	Unit tripped due to condensor vaccum low.
		21.07.13	03.55	23.07.13	22.20	Unit desynchronised due to no coal flow.
		24.07.13	17.40	02.08.13	13.20	Unit desynchronised to attend the leakage from ACW line.
		03.08.13	10.55	03.08.13	12.10	Dark out due to grid disturbance
		16.08.13	19.30	23.08.13	22.20	Stopped due to low demand and high frequency
26.08.13	12.15	26.08.13	13.20	Dark out due to grid disturbance		
28.08.13	22.15	31.08.13	23.59	Unit desynchronised to attend the boiler tube leakage		

(B) Gas Turbine

Unit No	Capacity in MW	Outage		Synchronization		Reason of Outage
		Date	Time	Date	Time	
1	30	01.04.13	0:00	01-04-13	5:45	Stopped due to low demand and high frequency
		03.04.13	16:30	10-04-13	11:25	
		18.04.13	23:20	19-04-13	12:01	Machine stopped to rectify the faulty Controller
		19.04.13	12:15	22-04-13	5:47	Stopped due to low demand and high frequency
		29.04.13	11:31	29-04-13	23:37	
		07.05.13	1:45	13-05-13	14:25	
		13.05.13	16:48	13-05-13	17:10	Machine came on FSNL during charging of 160 MVA Trf.
		18.05.13	13:25	21-05-13	21:10	Stopped due to low demand and high frequency
		30.05.13	21:45	17-06-13	22:55	
		17.06.13	23:15	18-06-13	20:15	
		28.06.13	10:52	28-06-13	22:00	
		28.06.13	22:00	29-06-13	17:00	Machine not available due to problem in Diesel Engine
		29.06.13	17:00	01-07-13	18:05	Stopped due to low demand and high frequency
		01.07.13	21:35	02-07-13	17:45	
		02.07.13	17:45	03-07-13	11:45	Machine could not be started due to problem in EOP
		03.07.13	11:45	08-07-13	8:55	Stopped due to low demand and high frequency
		12.07.13	11:50	15-07-13	8:00	
		15.07.13	9:10	15-07-13	10:40	
		17.07.13	11:20	18-07-13	20:35	
		20.07.13	12:05	27-07-13	21:30	
		27-07-13	21:40	28-07-13	0:12	Machine could not be synchronised due to ignition pressure high trip.
		29-07-13	13:55	29-07-13	15:10	Machine tripped due to GCV reference not followed and loss of flame
		31-07-13	10:40	31-07-13	11:27	Machine came on FSNL due to grid disturbance
		31-07-13	17:30	01.08.13	23:42	Stopped due to low demand and high frequency
		02.08.13	1:40	02.08.13	11:45	
		02.08.13	12:40	04.08.13	10:41	
		06.08.13	15:30	08.08.13	20:41	
		09.08.13	1:20	28.08.13	0:30	
		28.08.13	0:30	28.08.13	3:00	Machine taken out from DC due to leakage in ACW line.
		28.08.13	3:00	28.08.13	11:45	Stopped due to low demand and high frequency
28.08.13	11:45	28.08.13	14:00	due to leakage in ACW line,GT# 1 not available		
28.08.13	14:00	31.08.13	23:59	Stopped due to low demand and high frequency		

Unit No	Capacity in MW	Outage		Synchronization		Reason of Outage
		Date	Time	Date	Time	
2	30	01-04-13	0:00	01-04-13	5:35	Stopped due to low demand and high frequency
		03-04-13	12:02	09-04-13	5:50	
		10-04-13	17:25	11-04-13	11:45	
		28-04-13	21:40	28-04-13	23:45	
		07-05-13	16:30	13-05-13	17:20	
		17-05-13	16:20	28-06-13	22:00	
		28-06-13	22:00	29-06-13	17:00	Machine not available due to problem in Gas Valve
		29-06-13	17:00	02-07-13	17:45	Stopped due to low demand and high frequency
		02-07-13	17:45	03-07-13	13:15	Machine could not be started due to problem in EOP
		03-07-13	13:15	28.08.13	0:30	Stopped due to low demand and high frequency
		28.08.13	0:30	28.08.13	3:00	Machine taken out from DC due to leakage in ACW line.
		28.08.13	3:00	28.08.13	11:45	Stopped due to low demand and high frequency
		28.08.13	11:45	28.08.13	14:00	due to leakage in ACW line,GT# 2 not available
		28.08.13	14:00	31.08.13	23:59	Stopped due to low demand and high frequency

Unit No	Capacity in MW	Outage		Synchronization		Reason of Outage
		Date	Time	Date	Time	
3	30	01-04-13	0:00	01-04-13	7:30	Stopped due to low demand and high frequency
		17-04-13	10:40	22-04-13	8:10	
		28-04-13	21:46	29-04-13	10:55	
		04-05-13	0:05	06-05-13	14:00	
		07-05-13	1:50	07-05-13	12:00	
		11-05-13	19:30	14-05-13	17:15	
		14-05-13	18:23	14-05-13	21:00	
		14-05-13	21:00	17-05-13	15:45	
		06-06-13	17:04	06-06-13	19:00	Machine came on FSNL due to tripping of 160 MVA Tr-I & II at IP Extension end.
		06-06-13	22:47	07-06-13	11:55	Stopped due to low demand and high frequency
		09-06-13	8:09	09-06-13	9:50	Machine came on FSNL due to tripping of 160 MVA Tr-I & II Buchholtz relay operated after that tripped on Lube oil temperature high as the auxiliary supply failed .
		11-06-13	12:45	12-06-13	7:56	Stopped due to low demand and high frequency
		14-06-13	8:45	17-06-13	20:50	
		23-06-13	23:40	24-06-13	8:16	
		28-06-13	9:40	28-06-13	21:13	
		30-06-13	9:18	01-07-13	17:23	
		02-07-13	12:44	02-07-13	13:40	
		12-07-13	14:25	12-07-13	21:30	Stopped due to low demand and high frequency
		11-07-13	11:30	18-07-13	20:40	
		20-07-13	12:06	20-07-13	13:22	
		22-07-13	10:32	22-07-13	10:46	Machine came on FSNL due to grid disturbance
		22-07-13	11:20	22-07-13	12:55	Machine taken on FSNL due to voltage problem,160 MVA Tx. Not synchronised
		27-07-13	11:05	27-07-13	21:45	Stopped due to low demand and high frequency
		28-07-13	20:05	30-07-13	20:53	
		31-07-13	10:40	31-07-13	15:55	Machine tripped due to grid disturbance
		03.08.13	10:56	03.08.13	11:23	Machine came on FSNL due to grid disturbance
		03.08.13	11:23	05.08.13	19:30	Stopped due to low demand and high frequency
		06.08.13	15:34	07.08.13	15:40	
		09.08.13	22:15	26.08.13	9:15	
		26.08.13	12:12	26.08.13	12:58	machine tripped due to Grid disturbance
28.08.13	0:30	28.08.13	2:50	due to leakage in ACW line,GT not available		

Unit No	Capacity in MW	Outage		Synchronization		Reason of Outage
		Date	Time	Date	Time	
4	30	01-04-13	0:00	03-04-13	15:50	Stopped due to low demand and high frequency
		17-04-13	10:40	27-04-13	3:15	
		04-05-13	0:02	06-05-13	14:13	
		07-05-13	13:20	07-05-13	15:55	
		11-05-13	19:32	14-05-13	9:58	
		21-05-13	13:10	21-05-13	17:10	
		30-05-13	3:05	05-06-13	11:58	
		06-06-13	17:04	06-06-13	17:15	Machine came on FSN1 due to tripping of 160 MVA Tr-I & II at IP Extension end.
		09-06-13	8:09	09-06-13	9:40	Machine came on FSNL due to tripping of 160 MVA Tr-I & II Buchholtz relay operated after that tripped on Lube oil temperature high as the auxiliary supply failed .
		11-06-13	12:45	12-06-13	7:54	Stopped due to low demand and high frequency
		14-06-13	10:20	17-06-13	23:59	
		18-06-13	0:00	19-06-13	21:45	machine not available due to non availability of 66 KV breaker.
		19-06-13	21:45	21-06-13	9:22	Machine not taken on bar due to less schedule from SLDC.
		24-06-13	14:46	24-06-13	15:30	Stopped due to low demand and high frequency
		28-06-13	9:30	28-06-13	22:00	
		28-06-13	22:00	29-06-13	12:10	machine not available due to non availability of AC AOP
		02-07-13	12:44	02-07-13	13:05	Machine came on FSNL due to grid disturbance
		17-07-13	11:30	18-07-13	23:27	Stopped due to low demand and high frequency
		22-07-13	10:32	22-07-13	11:02	Machine came on FSNL due to grid disturbance
		24-07-13	10:10	01.08.13	22:55	Stopped due to low demand and high frequency
		03.08.13	10:56	03.08.13	11:58	Machine came on FSNL due to grid disturbance
		04.08.13	12:50	05.08.13	20:05	Stopped due to low demand and high frequency
		10.08.13	13:32	26.08.13	9:10	
		26.08.13	12:12	26.08.13	13:05	Machine came on FSNL due to grid disturbance
		28.08.13	0:32	28.08.13	3:00	due to leakage in ACW line,GT not available
		28.08.13	3:00	28.08.13	5:12	Stopped due to low demand and high frequency

Unit No	Capacity in MW	Outage		Synchronization		Reason of Outage
		Date	Time	Date	Time	
5	30	28-04-13	9:34	06-05-13	13:25	Stopped due to low demand and high frequency
		13-05-13	16:48	14-05-13	9:27	
		14-05-13	9:47	18-05-13	10:56	
		24-05-13	18:52	25-05-13	9:55	Tripped due to R-communication link failure alarm & master protective alarm appeared.
		06-06-13	17:04	06-06-13	17:48	Machine came on FSN1 due to tripping of 160 MVA Tr-I & II at IP Extension end.
		09-06-13	8:09	09-06-13	8:54	Machine came on FSNL due to tripping of 160 MVA Tr-I & II Buchholtz relay operated after that tripped on Lube oil temperature high as the auxiliary supply failed .
		09-06-13	8:54	10-06-13	7:47	Machine not taken on load due to low schedule from SLDC
		17-06-13	12:17	17-06-13	14:00	Machine tripped on Bus under Voltage alarm as 66 KV bus became dead due to tripping of 160 MVA Tx-I & II .
		18-06-13	13:53	18-06-13	15:45	Machine tripped at IGV Control trouble and Fire Protection Alarm.
		02-07-13	12:44	02-07-13	13:08	Machine came on FSNL due to grid disturbance
		06-07-13	10:55	08-07-13	9:15	Stopped due to low demand and high frequency
		08-07-13	11:32	11-07-13	23:00	
		11-07-13	23:00	12-07-13	10:29	Machine could not be synchronised due to Overall diff. opearted problem
		12-07-13	20:42	15-07-13	8:55	Stopped due to low demand and high frequency
		16-07-13	8:29	16-07-13	9:55	Machine tripped on electrical trouble normal shut down (Due to MVR problem)
		17-07-13	3:00	17-07-13	5:00	
		20-07-13	13:33	23-07-13	21:15	Stopped due to low demand and high frequency
		31-07-13	10:40	31-07-13	10:50	Machine came on FSNL due to grid disturbance
		03.08.13	10:56	03.08.13	11:10	Machine came on FSNL due to grid disturbance
		07.08.13	14:45	08.08.13	21:05	Stopped due to low demand and high frequency
		26.07.13	12:12	26.08.13	12:38	Machine came on FSNL due to grid disturbance
		26.08.13	20:00	27.08.13	11:10	Stopped due to low demand and high frequency
		28.08.13	0:25	28.08.13	2:55	due to leakage in ACW line,GT not available
30.08.13	22:15	31.08.13	23:59	Stopped due to low demand and high frequency		

Unit No	Capacity in MW	Outage		Synchronization		Reason of Outage
		Date	Time	Date	Time	
6	30	10-04-13	12:45	10-04-13	16:30	Stopped due to low demand and high frequency
		21-04-13	12:42	22-04-13	10:15	
		28-04-13	9:32	30-04-13	0:40	
		13-05-13	13:00	13-05-13	16:48	Tripped due to heavy jerk observed in control room.
		13-05-13	16:48	14-05-13	10:38	Stopped due to low demand and high frequency
		14-05-13	18:00	21-05-13	11:05	
		29-05-13	10:42	29-05-13	12:30	Oil temp gauge which is mounted on T/F was founded tilted by at least 30 which leads to maloperation of mercury switch and relay 26 TP-I & 26TP-II operated causing the machine tripped on Electrical trouble normal shutdown
		06-06-13	17:04	06-06-13	17:52	Machine came on FSNL due to tripping of 160 MVA Tr-I & II at IP Extension end.
		06-06-13	22:50	07-06-13	12:04	Stopped due to low demand and high frequency
		09-06-13	8:09	09-06-13	8:54	Machine came on FSNL due to tripping of 160 MVA Tr-I & II Buchholtz relay operated after that tripped on Lube oil temperature high as the auxiliary supply failed .
		09-06-13	8:54	10-06-13	7:52	Machine not taken on load due to low schedule from SLDC
		14-06-13	8:50	14-06-13	10:05	Stopped due to low demand and high frequency
		17-06-13	12:17	17-06-13	17:10	Machine tripped on Reverse Power relay operated as 66 KV bus become dead due to tripping of 160 MVA transformer I & II.
		30-06-13	9:07	01-07-13	17:25	Stopped due to low demand and high frequency
		02-07-13	12:44	02-07-13	13:10	Machine came on FSNL due to grid disturbance
		06-07-13	10:50	08-07-13	9:01	Stopped due to low demand and high frequency
		08-07-13	11:37	11-07-13	19:50	
		12-07-13	14:25	15-07-13	6:24	
		20-07-13	13:30	24-07-13	9:25	
		31-07-13	10:40	31-07-13	11:36	Machine came on FSNL due to grid disturbance
		03.08.13	10:56	03.08.13	11:15	Machine came on FSNL due to grid disturbance
		07.08.13	16:30	08.08.13	20:47	Stopped due to low demand and high frequency
		09.08.13	22:15	10.08.13	12:30	
		26.08.13	12:12	26.08.13	12:18	Machine came on FSNL due to grid disturbance
		26.08.13	19:20	27.08.13	11:45	Stopped due to low demand and high frequency
		28.08.13	0:26	28.08.13	0:30	due to leakage in ACW line,GT not available
		28.08.13	0:30	28.08.13	11:45	Stopped due to low demand and high frequency
		28.08.13	11:45	28.08.13	14:00	Machine not available due to Gas Valve leakage
		28.08.13	14:00	31.08.13	23:59	Stopped due to low demand and high frequency

Unit No	Capacity in MW	Outage		Synchronization		Reason of Outage	
		Date	Time	Date	Time		
STG-1	30	01-04-13	0:00	01-04-13	9:15	Stopped due to low demand and high frequency	
		01-04-13	9:30	01-04-13	11:10	Machine stopped due to inspection of high Vibration	
		03-04-13	16:30	09-04-13	8:25	Stopped due to low demand and high frequency	
		29-04-13	11:31	30-04-13	2:05		
		07-05-13	16:30	13-05-13	19:15		
		18-05-13	13:25	22-05-13	0:10		
		30-05-13	21:45	18-06-13	23:54		
		28-06-13	10:52	28-06-13	22:00		
		28-06-13	22:00	29-06-13	17:00		Machine not available due to Non availability of GTs
		29-06-13	17:00	01-07-13	21:00	Stopped due to low demand and high frequency	
		01-07-13	21:00	01-07-13	23:59	Machine not available due to problem in both BFPs.	
		02-07-13	0:00	02-07-13	17:45	Stopped due to low demand and high frequency	
		02-07-13	17:45	03-07-13	11:45	Machine not available due to non availability of GTs.	
		03-07-13	13:15	08-07-13	10:15	Stopped due to low demand and high frequency	
		12-07-13	11:50	15-07-13	13:00		
		17-07-13	11:25	18-07-13	23:15		
		20-07-13	12:10	27-07-13	21:30		
		27-07-13	21:30	28-07-13	0:12		
		28-07-13	0:12	28-07-13	1:55		
		29-07-13	13:55	29-07-13	16:00		Tripped due to tripping of GT#1
		31-07-13	10:40	31-07-13	13:55		Machine tripped due to grid disturbance
		31-07-13	17:30	02.08.13	13:15	Stopped due to low demand and high frequency	
		02.08.13	13:15	02.08.13	18:15	Due to oil leakage from Turbine side machine taken under shut down by M-II	
		02.08.13	18:15	04.08.13	12:45	Stopped due to low demand and high frequency	
		06.08.13	15:29	08.08.13	22:40		
		09.08.13	1:20	25.08.13	23:59		
		28.08.13	0:30	28.08.13	3:00	Machine not available due to Non availability of GT#1 and 2	
		28.08.13	3:00	28.08.13	11:45	Stopped due to low demand and high frequency	
		28.08.13	11:45	28.08.13	14:10	due to leakage in ACW line,GT# 1 and 2 not available	
		28.08.13	14:00	31.08.13	23:59	Stopped due to low demand and high frequency	

Unit No	Capacity in MW	Outage		Synchronization		Reason of Outage
		Date	Time	Date	Time	
STG-2	30	01-04-13	0:00	01-04-13	11:25	Stopped due to low demand and high frequency
		16-04-13	10:40	22-04-13	11:45	
		23-04-13	12:14	23-04-13	13:09	Machine tripped due to malfunctioning of MS-14 Valve
		27-04-13	5:30	27-04-13	6:15	Machine tripped in the jerk.
		28-04-13	21:46	29-04-13	11:30	Stopped due to low demand and high frequency
		04-05-13	0:02	06-05-13	17:05	
		11-05-13	19:30	14-05-13	13:57	
		19-05-13	1:25	19-05-13	3:05	Machine Tripped on Exhaust pressure high.
		05-06-13	1:01	05-06-13	2:21	Tripped due to sudden drop in vacuum without appearing alarm in annunciation pannel.
		06-06-13	17:04	06-06-13	18:55	Machine tripped as the GT#3 & 4 came on FSNL due to tripping of 160 MVA Tx-I & II at IP Extn end.
		09-06-13	8:09	09-06-13	11:52	Machine tripped as corresponding GT came on FSNL due to tripping of 160 MVA Tr-I & II on Buchholtz relay operated .
		10-06-13	11:42	10-06-13	12:50	Machine stopped to attend
		11-06-13	12:45	12-06-13	10:35	Stopped due to low demand and high frequency
		14-06-13	8:45	17-06-13	23:45	
		23-06-13	21:35	23-06-13	23:20	Machine tripped on LLVT tank v. High Alarm
		28-06-13	9:40	28-06-13	23:15	Stopped due to low demand and high frequency
		02-07-13	12:44	02-07-13	14:25	Machine tripped due to grid disturbance.
		17-07-13	11:35	18-07-13	23:20	Stopped due to low demand and high frequency
		22-07-13	9:35	22-07-13	12:40	Machine tripped due to grid disturbance.
		27-07-13	11:07	27-07-13	23:15	Stopped due to low demand and high frequency
		28-07-13	20:07	31-07-13	3:00	
		31-07-13	10:40	31-07-13	17:24	Machine tripped due to grid disturbance.
		03.08.13	10:56	03.08.13	13:07	machine tripped due to Grid disturbance
		04.08.13	12:50	05.08.13	21:35	
		10.08.13	13:32	26.08.13	18:39	Stopped due to low demand and high frequency
		28.08.13	0:32	28.08.13	3:00	Machine not available due to Non availability of GT#3 and 4
		28.08.13	3:00	28.08.13	4:45	Stopped due to low demand and high frequency

Unit No	Capacity in MW	Outage		Synchronization		Reason of Outage
		Date	Time	Date	Time	
STG-3	30	05-04-13	17:05	05-04-13	18:20	Machine stopped manually to attend oil Leakage from Secondary oil Pressure line
		28-04-13	9:34	30-04-13	4:25	Stopped due to low demand and high frequency
		03-05-13	17:41	03-05-13	19:04	Machine stopped due to problem in drum level indication and level problem.
		13-05-13	13:00	13-05-13	16:48	Tripped due to heavy jerk observed in control room.
		13-05-13	16:48	14-05-13	13:50	Stopped due to low demand and high frequency
		14-05-13	18:00	18-05-13	13:05	
		03-06-13	9:22	03-06-13	10:07	Machine tripped on Hot well very high alarm as the Control valve CD-34 left the auto and closed. Another Stream CD-37 tried to be taken into service, in the mean time machine tripped on hot well high alarm.
		06-06-13	17:04	06-06-13	18:30	Machine tripped as the GT#5 & 6 came on FSNL due to tripping of 160 MVA Tx-I & II at IP Extn end.
		09-06-13	8:09	09-06-13	8:54	Machine tripped as corresponding GT came on FSNL due to tripping of 160 MVA Tr-I & II on Buchholtz relay operated .
		09-06-13	8:54	10-06-13	10:14	Machine not taken on load due to low schedule from SLDC
		15-06-13	1:58	15-06-13	2:58	Tripped due to LLVT tank level high.
		17-06-13	12:17	17-06-13	15:12	Machine tripped due to both GTs tripped due to Tripping of 160 MVA Tx.
		02-07-13	12:44	02-07-13	14:35	Machine tripped due to grid disturbance.
		06-07-13	10:55	08-07-13	10:15	Stopped due to low demand and high frequency
		08-07-13	10:15	11-07-13	23:07	Machine stopped to attend oil leakage from Oil catcher.
		12-07-13	20:42	15-07-13	8:40	Stopped due to low demand and high frequency
		20-07-13	12:37	20-07-13	13:33	Machine tripped manually due to sticking of MS-14 valve and not opearting of MS-11 and MS-13 valve.
		20-07-13	13:33	24-07-13	2:05	Stopped due to low demand and high frequency
		31-07-13	10:40	31-07-13	12:27	Machine tripped due to grid disturbance.
		03.08.13	10:56	03.08.13	12:02	Machine tripped due to Grid disturbance
		07.08.13	16:32	09.08.13	1:12	Stopped due to low demand and high frequency
		17.08.13	11:48	17.08.13	12:45	All the parameters of Turbovisiory and Electronic governor disappeared resulting tripping of steam turbine.
		26.08.13	12:12	26.08.13	13:57	Machine tripped due to Grid disturbance
		26.08.13	18:24	27.08.13	13:48	Stopped due to low demand and high frequency
		28.08.13	0:30	28.08.13	3:00	Machine not available due to Non availability of GT#5 and 6
		28.08.13	3:00	28.08.13	6:30	
		30.08.13	22:18	31.08.13	23:59	Stopped due to low demand and high frequency

(C) PRAGATI STATION

Unit No	Capacity in MW	Outage		Synchronization		Reason of Outage
		Date	Time	Date	Time	
1	104	23.05.13	14.29	23.05.13	14.56	Tripped due to Gas Fuel Pr. Low by GAIL
		15.06.13	21.55	17.06.13	9.00	No schedule to run GT#1 on Open Cycle.
		17.06.13	9.00	24.06.13	0.26	Tripped on internal fault
		25.06.13	22.00	26.06.13	2.00	
		26.06.13	2.00	26.06.13	13.42	No schedule of GT#1 in OC due to low demand, HRSG#1 not available- FW104 stuck
		09.07.13	19.03	09.07.13	19.50	Tripped on internal fault
		22.07.13	10.43	22.07.13	12.26	Tripped due to Grid Disturbance
		23.07.13	16.28	23.07.13	19.29	Tripped on internal fault

Unit No	Capacity in MW	Outage		Synchronization		Reason of Outage
		Date	Time	Date	Time	
2	104	21.04.13	8.15	21.04.13	18.15	Stopped by DTL to attend hot spot.
		21.04.13	18.15	23.04.13	6.31	Tripped on internal fault
		26.04.13	6.45	26.04.13	8.37	
		14.05.13	13.28	14.05.13	14.13	
		06.06.13	17.10	06.06.13	18.05	Tripped due to Grid Disturbance
		01.07.13	16.02	01.07.13	17.40	Tripped on internal fault
		02.07.13	12.54	02.07.13	13.55	Tripped due to Grid Disturbance
		08.07.13	11.37	08.07.13	12.48	Tripped on internal fault
		22.07.13	10.43	22.07.13	11.52	Tripped due to Grid Disturbance
		03.08.13	10.57	03.08.13	11.08	Tripped due to Grid Disturbance
		15.08.13	10.48	16.08.13	16.31	Stopped due to low demand and high frequency
		26.08.13	12.15	26.08.13	12.26	Tripped due to Grid Disturbance
		28.08.13	6.07	29.08.13	8.53	Stopped due to low demand and high frequency
29.08.13	20.40	29.08.13	22.30	Tripped on internal fault		

Unit No	Capacity in MW	Outage		Synchronization		Reason of Outage
		Date	Time	Date	Time	
STG	122	17.04.13	18.37	17.04.13	19.52	Tripped on internal fault
		21.04.13	11.44	21.04.13	14.15	
		21.04.13	14.15	21.04.13	18.36	Shut down continued by DTL to attend hot spot.
		06.06.13	17.10	06.06.13	18.50	Tripped due to Grid Disturbance
		02.07.13	12.54	02.07.13	15.02	
		09.07.13	19.03	09.07.13	20.15	Tripped on internal fault
		22.07.13	10.43	22.07.13	15.53	Tripped due to Grid Disturbance
		23.07.13	16.28	23.07.13	17.42	Tripped on internal fault
		03.08.13	10.57	03.08.13	11.47	Tripped due to Grid Disturbance
		26.08.13	12.15	26.08.13	13.35	Tripped due to Grid Disturbance
		29.08.13	20.45	29.08.13	22.52	Tripped on internal fault

(D) **BADARPUR THERMAL POWER STATION**

Unit	Capacity in MW	Outage		Synchronization		Reason of Outage
		Date	Time	Date	Time	
1	95	01.04.13	0:00	01.04.13	19:18	Reserve Shutdown
		12.05.13	18:18	12.05.13	21:20	Grid Disturbance
		04.06.13	22:45	05.06.13	23:45	Water Wall tube leakage
		13.06.13	10:58	13.06.13	11:32	Furnace Disturbance
		16.06.13	18:38	21.06.13	14:14	Reserve Shutdown
		09.07.13	20:41	15.07.13	0:00	
		19.07.13	3:28	20.07.13	18:14	
		26.07.13	14:36	29.07.13	16:00	Reserve Shutdown
		10.08.13	15:12	10.08.13	16:00	
		10.08.13	17:11	10.08.13	23:15	
		10.08.13	23:15	31.08.13	23:59	Reserve Shutdown

Unit	Capacity in MW	Outage		Synchronization		Reason of Outage
		Date	Time	Date	Time	
2	95	12.05.13	18:18	12.05.13	20:07	Grid Disturbance
		28.06.13	10:32	28.07.13	9:56	Reserve Shutdown
		08.08.13	11:01	10.08.13	22:09	
		23.08.13	13:14	23.08.13	14:15	

Unit	Capacity in MW	Outage		Synchronization		Reason of Outage
		Date	Time	Date	Time	
3	95	03.04.13	19:55	22.04.13	13:40	Planned Shutdown
		12.05.13	18:18	12.05.13	20:20	Grid Disturbance
		26.05.13	12:41	27.05.13	12:58	Economiser Tube leakage
		13.06.13	10:40	18.06.13	12:04	Reserve Shutdown
		04.07.13	5:45	04.07.13	7:06	Furnace Disturbance
		18.07.13	11:39	19.07.13	2:48	Reserve Shutdown
		01.08.13	21:28	02.08.13	13:43	Water Wall tube leakage
		03.08.13	3:45	03.08.13	6:14	Furnace Disturbance
		03.08.13	17:10	03.08.13	18:02	
		06.08.13	11:15	06.08.13	11:56	
		07.08.13	11:40	31.08.13	23:59	Reserve Shutdown

Unit	Capacity in MW	Outage		Synchronization		Reason of Outage
		Date	Time	Date	Time	
4	210	09.04.13	22:17	10.04.13	2:07	MDBFP relay malfunction
		12.05.13	18:18	12.05.13	21:35	Grid Disturbance
		25.05.13	7:28	23.05.13	15:34	UAT 4A diff relay casing shorted
		11.06.13	15:35	13.06.13	7:48	Reserve Shutdown
		10.08.13	10:24	10.08.13	13:40	AVR & EXCITATION SYSTEM

Unit	Capacity in MW	Outage		Synchronization		Reason of Outage
		Date	Time	Date	Time	
5	210	09.05.13	0:06	09.05.13	15:57	APH 5B NDE Bearing vibration high
		11.05.13	19:48	14.05.13	12:17	Reserve Shutdown
		16.06.13	15:58	16.06.13	17:09	CW Shortage
		24.06.13	16:23	24.06.13	17:45	Furnace Disturbance
		24.06.13	18:04	24.06.13	19:03	
		27.06.13	14:20	27.06.13	18:31	AVR & Excitation System
		04.07.13	0:12	04.07.13	1:15	Furnace Disturbance
		27.07.13	19:16	30.07.13	1:24	Steam Cooled W/Wall leakage
		01.08.13	20:43	02.08.13	18:30	Drum manhole leakage
		14.08.13	19:00	15.08.13	10:15	Water Wall tube leakage
		15.08.13	10:15	16.08.13	7:13	Reserve S/D

(E) **BAWANA CCGT POWER STATION**

Unit	Capacity in MW	Outage		Synchronization		Reason of Outage
		Date	Time	Date	Time	
1	216	01.04.13	00:00	01.04.13	8:39	Combustion inspection
		05.04.13	10:55	21.04.13	--	M/C under planned shut down due to CW interconnection/CW sump cleaning/Diverter Damper setting
		19.06.13	00:26	19.06.13	02:42	G.T. -1 tripped due to Hot gas temp high.
		20.06.13	20:42	05.08.13	09:10	Stopped due to low demand and high frequency
		19.08.13	14:27	26.08.13	11:54	Stopped due to low demand and high frequency

Unit	Capacity in MW	Outage		Synchronization		Reason of Outage
		Date	Time	Date	Time	
2	216	05.04.13	13:13	12.04.13	19:02	M/C under planned shut down due to CW interconnection/CW sump cleaning/Diverter Damper setting up to 12.04.13
		14.04.13	13:40	25.04.13	08:57	Stopped due to low demand and high frequency
		29.04.13	22:25	30.04.13	06:25	M/C Stopped due to gas leakage in pipe line
		07.05.13	20:38	08.05.13	0:26	CW Pump Motor Failure
		29.05.13	13:57	29.05.13	15:30	GT#2 tripped on EPB press by default
		03.06.13	10:54	03.06.13	13:53	GT #2 tripped due to its rotor earth fault
		06.06.13	22:50	10.06.13	12:38	Stopped due to low demand and high frequency
		13.06.13	08:14	20.06.13	18:33	Stopped due to low demand and high frequency
		21.06.13	08:21	21.06.13	12:54	GT #2 tripped due to difference in G-1 feedback
		30.06.13	14:16	30.06.13	14:58	GT#2 Tripped on Excitation tripping
		12.07.13	15:00	Contd.		Stopped due to low demand and high frequency

Unit	Capacity in MW	Outage		Synchronization		Reason of Outage
		Date	Time	Date	Time	
STG	254	01.04.13	0:00	27.04.13	19:19	M/C under planned shut down due to CW interconnection/CW sump cleaning/Diverter Damper setting up to 12.04.13 after force shutdown due to bearing failure of turbine up to 25.04.13 and 25.04.13 to 27.04.13 due to generator IR value low
		29.04.13	22:25	30.04.13	6:25	M/C Stopped due to gas leakage in pipe line
		30.04.13	22:07	30.04.13	23:37	GT#2 Diverted damper is closed
		07.05.13	20:35	08.05.13	3:12	CW Pump A Motor Failure
		08.05.13	11:57	08.05.13	13:19	CW Pump B Motor winding temperature increased up to threshold limit
		29.05.13	13:57	29.05.13	16:50	STG trip on GT trip
		03.06.13	10:54	03.06.13	15:57	
		06.06.13	22:50	10.06.13	17:50	Stopped due to low demand and high frequency
		13.06.13	08:16	19.06.13	09:10	
		21.06.13	08:21	21.06.13	13:00	STG trip on GT trip
		27.06.13	18:01	27.06.13	18:42	GT#2 Diverted damper is closed
		29.06.13	17:31	29.06.13	18:29	CW Pump B Discharge valve closed
		30.06.13	14:16	30.06.13	15:34	STG trip on GT trip
		12.07.13	15:00	05.08.13	11:58	Stopped due to low demand and high frequency
19.08.13	14:29	26.08.13	17:41			
31.08.13	12:52	31.08.13	14:12	STG tripped on internal fault		

(E) RITHALA POWER STATION

Unit	Capacity in MW	Outage		Synchronization		Reason of Outage
		Date	Time	Date	Time	
1	31.8	19.03.13	17:32	Contd.		No schedule have been given by SLDC on Spot gas

Unit	Capacity in MW	Outage		Synchronization		Reason of Outage
		Date	Time	Date	Time	
2	31.8	05.03.13	15:38	07.06.13	12:05	No schedule have been given by SLDC on Spot gas Gas turbine taken on spot)
		07.06.13	22:41	Contd.		No schedule have been given by SLDC on Spot gas

Unit	Capacity in MW	Outage		Synchronization		Reason of Outage
		Date	Time	Date	Time	
STG	31.8	27.02.13	00:01	07.06.13	17:40	No schedule have been given by SLDC on Spot gas
		07.06.13	22:38	Contd.		No schedule have been given by SLDC on Spot gas

4 ALLOCATION OF POWER TO DELHI
A) Allocation of power to Delhi from Unallocated quota of Central Sector Generating Stations to Delhi w.e.f. 19.01.2013

Time block 00.00hrs. to 24.00hrs. @ 0% allocation from Unallocated Quota

Name of the Stn	Installed capacity	Total Un-allocated	Basic Allocation	Basic Allocation at periphery	Allocation out of Unallocated Quota	Allocation out of Un-allocated Quota at Delhi periphery	Total allocation at Delhi periphery
1	2	3	4	5	6	7	(8)=(5)+(7)
NTPC STATIONS							
Singrauli STPS	2000	300	150	130	0	0	130
Rihand-I	1000	150	100	87	0	0	87
Rihand Stage -II	1000	150	126	109	0	0	109
Rihand Stage -III	500	75	66	57	0	0	57
ANTA GPS	419	63	44	41	0	0	41
Auriya GPS	663.36	99	72	67	0	0	67
Dadri GPS	829.78	129	91	85	0	0	85
Dadri NCTPS (Th)	840	0	756	657	0	0	657
Dadri NCTPS (Th) Stage-II	980	147	735	639	0	0	639
Unchahaar-I TPS	420	20	24	21	0	0	21
Unchahaar-II TPS	420	63	47	41	0	0	41
Unchahaar-III TPS	210	31	29	25	0	0	25
TOTAL	9282	1227	2240	1959	0	0	1959
NHPC							
Baira Suil HPS	180	0	20	19	0	0	19
Salal HPS	690	0	80	76	0	0	76
Tanakpur HEP	94	0	12	11	0	0	11
Chamera HEP	540	0	43	41	0	0	41
Chamera-II HEP	300	54	40	38	0	0	38
Chamera-III HEP	231	35	29	28	0	0	28
URI HEP	480	0	53	50	0	0	50
Sewa HEP	120	18	16	15	0	0	15
Dhaulti Ganga HEP	280	42	37	35	0	0	35
Dulhasti HEP	390	58	50	48	0	0	48
TOTAL	3305	206	380	361	0	0	361
NPC							
Narora APS	440	64	47	41	0	0	41
RAPP(B)	440	66	0	0	0	0	0
RAPP (C)	440	64	56	49	0	0	49
TOTAL	1320	194	103	89	0	0	89
SVJNL							
Nathpa Jhakri HEP	1500	149	142	123	0	0	123
THDC							
Tehri Hydro	1000	99	103	89	0	0	89
Koteshwar HEP	400	40	39	37	0	0	37
TOTAL	1400	139	142	127	0	0	127
Total	16807	1915	3007	2660	0	0	2660
Allocation from ER and Tala HEP							
Farakka	1600	0	22	19	0	0	19
Kahalgaon	840	0	51	43	0	0	43
Talchar	1000	0	0	0	0	0	0
Tala HEP	1020	153	30	25	0	0	25
Mejia TPS Unit-6	250	0	29	25	0	0	25
Kahalgaon-II	1500	0	157	131	0	0	131
Total ER	6210	153	290	242	0	0	242
Joint Venture							
Jhajjar TPS	1000	76	231	201	0	0	201
Grand Total	24017	2144	3528	3102	0	0	3102

B) Allocation of power to Delhi from Unallocated quota of Central Sector Generating Stations to Delhi w.e.f. 01.08.2013

Time block 00.00hrs. to 24.00hrs. @ 0% allocation from Unallocated Quota

Name of the Stn	Installed capacity	Total Un-allocated	Basic Allocation	Basic Allocation at periphery	Allocation out of Unallocated Quota	Allocation out of Un-allocated Quota at Delhi periphery	Total allocation at Delhi periphery
1	2	3	4	5	6	7	(8)=(5)+(7)
NTPC STATIONS							
Singrauli STPS	2000	300	150	130	0	0	130
Rihand-I	1000	150	100	87	0	0	87
Rihand Stage -II	1000	150	126	109	0	0	109
Rihand Stage -III	500	75	66	57	0	0	57
ANTA GPS	419	63	44	41	0	0	41
Auriya GPS	663.36	99	72	67	0	0	67
Dadri GPS	829.78	129	91	85	0	0	85
Dadri NCTPS (Th)	840	0	756	657	0	0	657
Dadri NCTPS (Th) Stage-II	980	147	735	639	0	0	639
Unchahaar-I TPS	420	20	24	21	0	0	21
Unchahaar-II TPS	420	63	47	41	0	0	41
Unchahaar-III TPS	210	31	29	25	0	0	25
TOTAL	9282	1227	2240	1959	0	0	1959
NHPC							
Baira Suil HPS	180	0	20	19	0	0	19
Salal HPS	690	0	80	76	0	0	76
Tanakpur HEP	94	0	12	11	0	0	11
Chamera HEP	540	0	43	41	0	0	41
Chamera-II HEP	300	54	40	38	0	0	38
Chamera-III HEP	231	35	29	28	0	0	28
URI HEP	480	0	53	50	0	0	50
Sewa HEP	120	18	16	15	0	0	15
Dhaulti Ganga HEP	280	42	37	35	0	0	35
Dulhasti HEP	390	58	50	48	0	0	48
TOTAL	3305	206	380	361	0	0	361
NPC							
Narora APS	440	64	47	41	0	0	41
RAPP(B)	440	66	0	0	0	0	0
RAPP (C)	440	64	56	49	0	0	49
TOTAL	1320	194	103	89	0	0	89
SVJNL							
Nathpa Jhakri HEP	1500	149	142	123	0	0	123
THDC							
Tehri Hydro	1000	99	103	89	0	0	89
Koteshwar HEP	400	40	39	37	0	0	37
TOTAL	1400	139	142	127	0	0	127
Total	16807	1915	3007	2660	0	0	2660
Allocation from ER and Tala HEP							
Farakka	1600	0	22	19	0	0	19
Kahalgaon	840	0	51	43	0	0	43
Talchar	1000	0	0	0	0	0	0
Tala HEP	1020	153	30	25	0	0	25
Mejia TPS Unit-6	250	0	29	25	0	0	25
Kahalgaon-II	1500	0	157	131	0	0	131
Total ER	6210	153	290	242	0	0	242
Joint Venture							
Jhajjar TPS	1500	114	377	327	0	0	327
Grand Total	24517	2182	3674	3229	0	0	3229

5 ALLOCATION OF POWER TO DISCOMS

A) ALLOCATION OF POWER TO VARIOUS LICENCEES AS PER ORDER OF DERC AND DECISION OF GNCTD FOR ALLOCATION OF CENTRAL SECTOR STATIONS (DADRI THERMAL & BTPS) AND STATE SECTOR GENERATING STATIONS w.e.f. 01.04.2011.

(Allocation In %)

(A) 10.00hrs. to 17.00hrs.

SOURCES	LICENSEES					
	NDMC	MES	NDPL	BRPL	BYPL	TOTAL
1. Central Sector without Dadri (Th)	0.00	0.00	29.18	43.58	27.24	100.00
2. Dadri (Th)	14.98	0.00	24.18	36.87	23.97	100.00
3. BTPS	15.94	7.09	21.88	33.37	21.72	100.00
4. RPH	0.85	0.00	28.39	42.97	27.79	100.00
5. GT	0.93	0.00	28.28	42.99	27.80	100.00
6. Pragati	26.69	0.00	20.77	31.76	20.7	100.00
7. DVC	0.00	0.00	29.18	43.58	27.24	100.00

(B) 00.00hrs. to 10.00hrs. and 17.00hrs. to 24.00hrs.

SOURCES	LICENSEES					
	NDMC	MES	NDPL	BRPL	BYPL	TOTAL
1. Central Sector without Dadri (Th)	0.00	0.00	29.18	43.58	27.24	100.00
2. Dadri (Th)	14.05	0.00	24.18	36.87	24.90	100.00
3. BTPS	15.07	7.09	21.88	33.37	22.59	100.00
4. RPH	0.00	0.00	28.390	42.97	28.64	100.00
5. GT	0.00	0.00	28.28	42.99	28.73	100.00
6. Pragati	25.76	0.00	20.77	31.76	21.71	100.00
7. DVC	0.00	0.00	29.18	43.58	27.24	100.00

B) ALLOCATION OF POWER TO VARIOUS LICENCEES AS PER ORDER OF DERC AND DECISION OF GNCTD FOR ALLOCATION OF CENTRAL SECTOR STATIONS (DADRI THERMAL & BTPS) AND STATE SECTOR GENERATING STATIONS w.e.f. 06.08.2013.

(Allocation In %)

(A) 10.00hrs. to 17.00hrs.

SOURCES	LICENSEES					
	NDMC	MES	NDPL	BRPL	BYPL	TOTAL
1. Central Sector without Dadri (Th)	0	0	29.18	43.58	27.24	100.00
2. Dadri (Th)	16.63	0	24.22	36.86	22.39	100.00
3. BTPS	17.73	7.09	21.81	33.2	20.17	100.00
4. RPH	0	0	29.025	44.133	26.842	100.00
5. GT	0	0	29.02	44.16	26.82	100.00
6. Pragati	30.3	0	20.22	30.78	18.7	100.00
7. DVC	0	0	29.18	43.58	27.24	100.00
8. Bawana	7.3	1.82	20.69	30.89	19.3	80.00

(B) 00.00hrs. to 10.00hrs. and 17.00hrs. to 24.00hrs.

SOURCES	LICENSEES					
	NDMC	MES	NDPL	BRPL	BYPL	TOTAL
1. Central Sector without Dadri (Th)	0	0	29.18	43.58	27.24	100.00
2. Dadri (Th)	16.53	0	24.22	36.86	22.39	100.00
3. BTPS	17.73	7.09	21.81	33.2	20.17	100.00
4. RPH	0	0	29.025	44.133	26.842	100.00
5. GT	0	0	29.02	44.16	26.82	100.00
6. Pragati	30.3	0	20.22	30.78	18.7	100.00
7. DVC	0	0	29.18	43.58	27.24	100.00
8. Bawana	7.3	1.82	20.69	30.89	19.3	80.00

6 POWER AVAILABILITY-DEMAND POSITION AT THE TIME OF PEAK DEMAND MET DURING AUGUST 2013

All figures in MW

Date	Time of peak demand	Generation within Delhi								Import from the Grid	Schedule from the Grid	OD(-)/UD(+)	Demand met	Shedding	Un-Restricted Demand
		RPH	GT	PPCL	Rithala	Bawana	Towmcl	BTPS	Total						
(1)	(2)	(3)	(4)	(5)	(6)	(7)	(8)		(9)=(3) to (8)	(10)	(11)	(12)=(11) - (10)	(13)=(11)+ (12)	(14)	(15)= (13)+ (14)
1	15.21.36	0	115	263	0	-1	8	505	890	3813	3766	47	4703	0	4703
2	22.46.32	52	155	297	0	-2	15	500	1017	3819	3781	38	4836	2	4838
3	22.56.04	83	117	296	0	22	17	582	1117	3664	3868	-204	4781	0	4781
4	22.56.02	86	113	294	0	297	15	538	1343	3585	3725	-140	4928	30	4958
5	00.05.16	86	113	292	0	297	15	509	1312	3411	3273	138	4723	11	4734
6	00.00.12	89	190	301	0	314	16	510	1420	2992	3386	-394	4412	0	4412
7	22.29.04	50	75	290	0	251	15	446	1127	3154	3247	-93	4281	0	4281
8	16.04.44	40	75	265	0	305	15	412	1112	3078	3073	5	4190	33	4223
9	00.00.10	41	161	297	0	250	13	403	1165	2698	2793	-95	3863	0	3863
10	19.58.44	41	82	265	0	258	7	305	958	2938	2835	103	3896	0	3896
11	22.46.47	40	83	297	0	318	13	379	1130	2986	2888	98	4116	0	4116
12	22.36.24	45	81	295	0	277	14	414	1126	3310	3378	-68	4436	0	4436
13	15.23.27	40	80	261	0	241	15	354	991	3403	3376	27	4394	0	4394
14	15.30.00	37	65	288	0	243	9	401	1043	3338	3267	71	4381	0	4381
15	00.02.02	41	79	300	0	239	14	231	904	3109	3062	47	4013	0	4013
16	15.26.08	41	82	145	0	207	15	316	806	3313	3357	-44	4119	0	4119
17	12.33.56	50	53	292	0	248	15	381	1039	2805	2940	-135	3844	5	3849
18	22.46.41	43	81	263	0	209	2	366	964	2846	2894	-48	3810	0	3810
19	15.48.42	39	80	261	0	-8	11	365	748	3385	3312	73	4133	0	4133
20	12.20.45	45	80	270	0	-12	15	366	764	3090	3221	-131	3854	8	3862
21	15.29.22	45	77	286	0	-5	13	403	819	3411	3330	81	4230	0	4230
22	15.35.17	32	81	263	0	-5	13	387	771	3446	3414	32	4217	0	4217
23	15.39.19	0	78	286	0	-3	7	373	741	3739	3799	-60	4480	11	4491
24	22.38.16	41	81	291	0	-2	8	423	842	3753	3607	146	4595	10	4605
25	22.15.53	47	80	292	0	-3	9	415	840	3784	3407	377	4624	0	4624
26	15.46.11	45	114	283	0	28	13	404	887	4101	3775	326	4988	5	4993
27	22.27.57	89	151	264	0	244	15	385	1148	3759	3662	97	4907	2	4909
28	00.00.03	89	151	264	0	244	15	385	1148	3563	3500	63	4711	0	4711
29	23.30.00	44	113	243	0	239	11	406	1056	3668	3487	181	4724	3	4727
30	00.01.00	47	115	275	0	240	10	416	1103	3502	3504	-2	4605	0	4605
31	22.51.56	43	77	261	0	242	13	374	1010	3255	3286	-31	4265	0	4265

7 POWER AVAILABILITY- DEMAND POSITION AT THE TIME OF MAXIMUM UNRESTRICTED DEMAND DURING AUGUST 2013

Date	Time of peak demand	Generation within Delhi								Import from the Grid	Schedule from the Grid	OD(-)/UD(+)	Demand met	Shedding	Un-Restricted Demand
		RPH	GT	PPCL	Rithala	Bawana	Towmcl	BTPS	Total						
(1)	(2)	(3)	(4)	(5)	(6)	(7)	(8)		(9)= (3) to (8)	(10)	(11)	(12)= (11) - (10)	(13)= (11)+ (12)	(14)	(15)= (13)+ (14)
1	15.21.36	0	115	263	0	-1	8	505	890	3813	3766	47	4703	0	4703
2	22.46.32	52	155	297	0	-2	15	500	1017	3819	3781	38	4836	2	4838
3	22.56.04	83	117	296	0	22	17	582	1117	3664	3868	-204	4781	0	4781
4	22.56.02	86	113	294	0	297	15	538	1343	3585	3725	-140	4928	30	4958
5	00.05.16	86	113	292	0	297	15	509	1312	3411	3273	138	4723	11	4734
6	00.00.12	89	190	301	0	314	16	510	1420	2992	3386	-394	4412	0	4412
7	22.29.04	50	75	290	0	251	15	446	1127	3154	3247	-93	4281	0	4281
8	16.04.44	40	75	265	0	305	15	412	1112	3078	3073	5	4190	33	4223
9	00.00.10	41	161	297	0	250	13	403	1165	2698	2793	-95	3863	0	3863
10	19.58.44	41	82	265	0	258	7	305	958	2938	2835	103	3896	0	3896
11	22.46.47	40	83	297	0	318	13	379	1130	2986	2888	98	4116	0	4116
12	22.36.24	45	81	295	0	277	14	414	1126	3310	3378	-68	4436	0	4436
13	15.23.27	40	80	261	0	241	15	354	991	3403	3376	27	4394	0	4394
14	15.30.00	37	65	288	0	243	9	401	1043	3338	3267	71	4381	0	4381
15	00.02.02	41	79	300	0	239	14	231	904	3109	3062	47	4013	0	4013
16	15.26.08	41	82	145	0	207	15	316	806	3313	3357	-44	4119	0	4119
17	12.33.56	50	53	292	0	248	15	381	1039	2805	2940	-135	3844	5	3849
18	22.46.41	43	81	263	0	209	2	366	964	2846	2894	-48	3810	0	3810
19	15.48.42	39	80	261	0	-8	11	365	748	3385	3312	73	4133	0	4133
20	12.20.45	45	80	270	0	-12	15	366	764	3090	3221	-131	3854	8	3862
21	15.29.22	45	77	286	0	-5	13	403	819	3411	3330	81	4230	0	4230
22	15.35.17	32	81	263	0	-5	13	387	771	3446	3414	32	4217	0	4217
23	15.39.19	0	78	286	0	-3	7	373	741	3739	3799	-60	4480	11	4491
24	22.38.16	41	81	291	0	-2	8	423	842	3753	3607	146	4595	10	4605
25	22.15.53	47	80	292	0	-3	9	415	840	3784	3407	377	4624	0	4624
26	15.46.11	45	114	283	0	28	13	404	887	4101	3775	326	4988	5	4993
27	22.27.57	89	151	264	0	244	15	385	1148	3759	3662	97	4907	2	4909
28	00.00.03	89	151	264	0	244	15	385	1148	3563	3500	63	4711	0	4711
29	23.30.00	44	113	243	0	239	11	406	1056	3668	3487	181	4724	3	4727
30	00.01.00	47	115	275	0	240	10	416	1103	3502	3504	-2	4605	0	4605
31	22.51.56	43	77	261	0	242	13	374	1010	3255	3286	-31	4265	0	4265

SOURCEWISE SCHEDULED DRAWL FROM NORTHERN GRID AS WELL AS AVAILABILITY WITHIN DELHI FOR AUG 2013

A) AVAILABILITY FROM GENCO AND PRAGATI STNs. (all fig in MUs)

A (i) RPH	40.493
(ii) GT+STG	73.682
(iii) PRAGATI	201.589
(iv) RITHALA	0.000
(v) BAWANA CCGT	112.792
(vi) Timarpur - Okhla	11.649
TOTAL	440.205
B) AVAILABILITY FROM BTPS	304.865
C) AUXILIARY CONSUMPTION OF GENERATING STNs. EXCLUDING BTPS	20.762
D) NET GENERATION AVAILABLE WITHIN DELHI(A+B-C)	724.308

B) SOURCE WISE SCHEDULED DRAWL FROM THE NORTHERN GRID

NAME OF THE STATION	AVAILABILITY AT POWER PLANT	AVAILABILITY AT DELHI PERIPHERY	ALLOCATION MADE BY NRLDC AT POWER PLANT	ALLOCATION MADE BY NRLDC AT DELHI PERIPHERY
B/SUIL	11.418	11.115	11.418	11.115
SALAL	54.443	53.000	54.443	53.000
SASAN	6.855	6.682	6.855	6.683
TANKAPUR	8.222	8.004	8.222	8.004
CHAMERA	30.976	30.153	30.976	30.153
CHAMERA -II	27.584	26.853	27.584	26.853
CHAMERA -III	20.678	20.129	20.678	20.129
DHAULIGANGA	0.000	0.000	0.000	0.000
SEWA -2	11.822	11.508	11.815	11.501
URI	21.746	21.169	21.746	21.169
KOTESHWAR	26.162	25.466	26.139	25.443
MUNDRA_UMPP	0.000	0.000	0.000	0.000
ANTA (GAS)	28.815	28.047	23.323	22.699
ANTA (RLNG)	3.230	3.148	0.000	0.000
ANTA (LIQUID)	0.000	0.000	0.000	0.000
DADRI (GAS)	27.903	27.158	24.480	23.829
DADRI (RLNG)	16.506	16.073	0.000	0.000
DADRI (LIQUID)	0.000	0.000	0.000	0.000
AURAIYA (GAS)	20.870	20.311	17.972	17.491
AURAIYA (RLNG)	26.321	25.625	0.000	0.000
AURAIYA (LIQUID)	0.000	0.000	0.000	0.000
SINGRAULI	100.741	98.065	93.582	91.103
RIHAND -I	68.064	66.256	59.750	58.168
RIHAND -II	49.532	48.223	42.128	41.020
RIHAND -III	43.302	42.144	39.846	38.785
UNCHAAR-I	16.614	16.172	12.486	12.156
UNCHAAR-II	33.747	32.850	27.438	26.712
UNCHAAR-III	20.605	20.057	17.157	16.702
DADRI (TH)	419.256	408.142	318.436	310.015
DADRI (TH) STAGE-II	456.061	444.111	395.969	385.612
NAPP	18.694	18.199	18.694	18.199
RAPP 'B'	0.000	0.000	0.000	0.000
RAPP 'C'	30.439	29.637	30.210	29.415
NATHPA JHAKRI	108.159	105.288	108.159	105.288
DULASTI	31.510	30.673	31.510	30.673
TEHRI	80.137	78.006	80.137	78.006
JHAJJAR	272.050	264.825	37.592	36.567
KHELGAON	32.408	31.547	18.380	17.895
KHELGAON-II	102.781	100.037	83.208	80.996
FARAKA	11.970	11.650	9.989	9.724
TALA	22.915	22.306	22.915	22.306
TALCHER	0.000	0.000	0.000	0.000
DVC	220.818	218.117	218.117	212.313
UTTRANCHAL	20.876	20.658	20.658	20.127

NAME OF THE STATION	AVAILABILITY AT POWER PLANT	AVAILABILITY AT DELHI PERIPHERY	ALLOCATION MADE BY NRLDC AT POWER PLANT	ALLOCATION MADE BY NRLDC AT DELHI PERIPHERY
METHON POWER(NDPL)LT-06	112.257	110.908	110.908	107.942
DVC MEJIA (LT-08)(BYPL)	61.767	61.014	61.014	59.400
URS	0.000	0.000	0.000	0.000
RAJASTHAN	110.620	109.402	109.402	106.493
HIMACHAL PRADESH	85.875	84.933	84.933	82.680
MEGHALAYA	23.979	23.636	23.636	23.008
MADHYA PRADESH(WR)	111.458	109.880	109.880	106.979
JAMMU & KASHMIR	52.159	51.579	51.579	50.197
DVC (FOR NDPL) LT-09	8.925	8.814	8.814	8.579
HARYANA (LT-05)	2.616	2.589	2.589	2.523
UTTAR PRADESH	0.000	0.000	0.000	0.000
ORISSA	75.734	74.621	74.621	72.568
TO HARYANA	0.000	0.000	0.000	0.000
TO ORISSA	0.000	0.000	0.000	0.000
TO UTTAR PRADESH	-18.365	-18.631	-18.631	-19.147
TO TAMILNADU	-3.465	-3.522	-3.522	-3.620
TO KERALA	-8.199	-8.344	-8.344	-8.575
TO ANDHRA	-0.078	-0.080	-0.080	-0.082
TO MADHYA PRADESH	0.000	0.000	0.000	0.000
TO MAHARASHTRA	0.000	0.000	0.000	0.000
TO RAJASTHAN	0.000	0.000	0.000	0.000
TO ASSAM	0.000	0.000	0.000	0.000
TO SIKKIM	0.000	0.000	0.000	0.000
TO HIMACHAL PRADESH	0.000	0.000	0.000	0.000
TO WEST BENGAL	-6.253	-6.330	-6.330	-6.503
POWER EXCHANGE(IEX)	2.064	2.010	2.064	2.010
TO POWER EXCHANGE (IEX)	-269.336	-276.704	-269.336	-276.704
POWER EXCHANGE(PX)	0.000	0.000	0.000	0.000
TO POWER EXCHANGE (PX)	-35.883	-36.871	-35.883	-36.871
TO SHARE PROJECT (HARYANA)	-6.311	-6.489	-6.311	-6.489
TO SHARE PROJECT (PUNJAB)	-7.138	-7.341	-7.138	-7.341
TOTAL	2796.654	2716.477	2255.878	2176.898

C) AGENCY WISE BREAKUP OF ENERGY SCHEDULED DRAW FROM THE GRID

NAME OF THE STATION	AVAILABILITY AT POWER PLANT	AVAILABILITY AT DELHI PERIPHERY	ALLOCATION MADE BY NRLDC AT POWER PLANT	ALLOCATION MADE BY NRLDC AT DELHI PERIPHERY
NTPC - NR	1331.567	1296.382	1072.567	1044.293
NTPC - ER	147.158	143.234	111.577	108.616
NHPC	218.400	212.603	218.393	212.596
NPC	49.133	47.837	48.904	47.614
SASAN	6.855	6.682	6.855	6.683
KOTESHWAR	26.162	25.466	26.139	25.443
MUNDRA_UMPP	0.000	0.000	0.000	0.000
NATHPA JHAKRI	108.159	105.288	108.159	105.288
TEHRI	80.137	78.006	80.137	78.006
TALA	22.915	22.306	22.915	22.306
JHAJJAR	272.050	264.825	37.592	36.567
TALCHER	0.000	0.000	0.000	0.000
DVC	220.818	218.117	218.117	212.313
UTTRANCHAL	20.876	20.658	20.658	20.127
METHON POWER (NDPL)-LT-06	112.257	110.908	110.908	107.942
DVC MEJIA (LT-08)(BYPL)	61.767	61.014	61.014	59.400
URS	0.000	0.000	0.000	0.000
RAJASTHAN	110.620	109.402	109.402	106.493
HIMACHAL PRADESH	85.875	84.933	84.933	82.680
MEGHALAYA	23.979	23.636	23.636	23.008
MADHYA PRADESH(WR)	111.458	109.880	109.880	106.979
JAMMU & KASHMIR	52.159	51.579	51.579	50.197
DVC (FOR NDPL) LT-09	8.925	8.814	8.814	8.579
HARYANA (LT-05)	2.616	2.589	2.589	2.523
UTTAR PRADESH	0.000	0.000	0.000	0.000
ORISSA	75.734	74.621	74.621	72.568
POWER EXCHANGE(IEX)	2.064	2.010	2.064	2.010
POWER EXCHANGE(PX)	0.000	0.000	0.000	0.000
TOTAL	3151.683	3080.790	2611.452	2542.232

D) AGENCY WISE BREAKUP OF ENERGY SCHEDULED BY NRLDC FOR EXPORT TO OTHER UTILITIES FROM DTL

NAME OF THE STATION	AVAILABILITY AT POWER PLANT	AVAILABILITY AT PERIPHERY	ALLOCATION MADE BY NRLDC AT POWER PLANT	ALLOCATION MADE BY NRLDC AT POWER PERIPHERY
TO HARYANA	0.000	0.000	0.000	0.000
TO ORISSA	0.000	0.000	0.000	0.000
TO UTTAR PRADESH	-18.365	-18.631	-18.631	-19.147
TO TAMILNADU	-3.465	-3.522	-3.522	-3.620
TO ANDHRA	-0.078	-0.080	-0.080	-0.082
TO KERALA	-8.199	-8.344	-8.344	-8.575
TO MADHYA PRADESH	0.000	0.000	0.000	0.000
TO MAHARASHTRA	0.000	0.000	0.000	0.000
TO RAJASTHAN	0.000	0.000	0.000	0.000
TO ASSAM	0.000	0.000	0.000	0.000
TO SIKKIM	0.000	0.000	0.000	0.000
TO HIMACHAL PRADESH	0.000	0.000	0.000	0.000
TO WEST BENGAL	-6.253	-6.330	-6.330	-6.503
TO POWER EXCHANGE (IEX)	-269.336	-276.704	-269.336	-276.704
TO POWER EXCHANGE (PX)	-35.883	-36.871	-35.883	-36.871
TO SHARE PROJECT (HARYANA)	-6.311	-6.489	-6.311	-6.489
TO SHARE PROJECT (PUNJAB)	-7.138	-7.341	-7.138	-7.341
TOTAL	-355.029	-364.313	-355.574	-365.334
TOTAL SCHEDULED DRAWAL FROM THE GRID	2796.654	2716.477	2255.878	2176.898
TOTAL CONSUMPTION INCLUDING AUX. OF GENERATING STNs. EXCLUDING BTPS				2676.680
NET CONSUMPTION				2655.918
AVAILABILITY WITHIN DELHI				724.308
ACTUAL DRAWAL FROM THE GRID				1931.610
OVER DRAWAL(+)/UNDER DRAWAL(-) FROM THE GRID ON THE BASIS OF SCHEDULED ALLOCATION MADE BY NRLDC TO DELHI AT PERIPHERY				-245.288
LOAD SHEDDING				4.295
UNRESTRICTED DEMAND (GROSS)				2680.975
UNRESTRICTED DEMAND (NET)				2660.213
MAX. NET CONSUMPTION				96.289 ON 27.08.2013
MAX. LOAD SHEDDING				627MW ON 03.08.2013 AT 10.56HRS.
PEAK LOAD	Peak Demand during the month			SHEDDING AT PEAK TIME
DAY PEAK	4988MW AT 15.46.11HRS ON 26.08.2013			5 MW
EVENING PEAK	4938MW AT 22.30.00HRS ON 26.08.2013			6 MW
P.L.F. OF GENCO AND PRAGATI STNs.	RPH			40.32%
	GT			36.68%
	PRAGATI			82.11%
	RITHALA			0.00%
	BAWANA			22.16%
	Timarpur Okhla			97.86%

SHEDDING DETAILS DURING THE MONTH OF AUGUST 2013.

ALL FIGURES IN MUs

DATE	No. of Under Freq. Relay Operated	Shedding due to under frequency relay operation in MUs					Shedding due to Grid Restrictions (Over drawl / low freq.)			
		BSES		NDPL	NDMC	TOTAL	BSES		NDPL	NDMC
		BYPL	BRPL				BYPL	BRPL		
1	2	3	4	5	6	7=3 to 6	8	9	10	11
01-Aug-13	2	0.000	0.000	0.001	0.000	0.001	0.010	0.000	0.000	0.000
02-Aug-13	0	0.000	0.000	0.000	0.000	0.000	0.000	0.000	0.000	0.000
03-Aug-13	0	0.000	0.000	0.000	0.000	0.000	0.000	0.000	0.000	0.000
04-Aug-13	0	0.000	0.000	0.000	0.000	0.000	0.000	0.000	0.000	0.000
05-Aug-13	0	0.000	0.000	0.000	0.000	0.000	0.017	0.174	0.000	0.000
06-Aug-13	0	0.000	0.000	0.000	0.000	0.000	0.000	0.000	0.000	0.000
07-Aug-13	0	0.000	0.000	0.000	0.000	0.000	0.000	0.000	0.000	0.000
08-Aug-13	4	0.000	0.000	0.001	0.000	0.001	0.038	0.012	0.020	0.000
09-Aug-13	0	0.000	0.000	0.000	0.000	0.000	0.000	0.000	0.000	0.000
10-Aug-13	0	0.000	0.000	0.000	0.000	0.000	0.000	0.000	0.000	0.000
11-Aug-13	0	0.000	0.000	0.000	0.000	0.000	0.000	0.000	0.000	0.000
12-Aug-13	0	0.000	0.000	0.000	0.000	0.000	0.000	0.000	0.000	0.000
13-Aug-13	0	0.000	0.000	0.000	0.000	0.000	0.000	0.000	0.000	0.000
14-Aug-13	0	0.000	0.000	0.000	0.000	0.000	0.000	0.000	0.000	0.000
15-Aug-13	0	0.000	0.000	0.000	0.000	0.000	0.000	0.000	0.000	0.000
16-Aug-13	0	0.000	0.000	0.000	0.000	0.000	0.000	0.000	0.000	0.000
17-Aug-13	0	0.000	0.000	0.000	0.000	0.000	0.000	0.000	0.000	0.000
18-Aug-13	0	0.000	0.000	0.000	0.000	0.000	0.000	0.000	0.000	0.000
19-Aug-13	0	0.000	0.000	0.000	0.000	0.000	0.000	0.000	0.000	0.000
20-Aug-13	0	0.000	0.000	0.000	0.000	0.000	0.000	0.000	0.000	0.000
21-Aug-13	1	0.000	0.001	0.000	0.000	0.001	0.000	0.000	0.000	0.000
22-Aug-13	0	0.000	0.000	0.000	0.000	0.000	0.000	0.000	0.018	0.000
23-Aug-13	0	0.000	0.000	0.000	0.000	0.000	0.090	0.316	0.000	0.000
24-Aug-13	0	0.000	0.000	0.000	0.000	0.000	0.000	0.000	0.000	0.000
25-Aug-13	2	0.000	0.000	0.000	0.000	0.000	0.000	0.000	0.000	0.000
26-Aug-13	0	0.000	0.000	0.000	0.000	0.000	0.018	0.128	0.017	0.000
27-Aug-13	0	0.000	0.000	0.000	0.000	0.000	0.000	0.000	0.000	0.000
28-Aug-13	1	0.002	0.000	0.000	0.000	0.002	0.000	0.000	0.000	0.000
29-Aug-13	0	0.000	0.000	0.000	0.000	0.000	0.037	0.042	0.000	0.000
30-Aug-13	0	0.000	0.000	0.000	0.000	0.000	0.000	0.000	0.000	0.000
31-Aug-13	2	0.001	0.000	0.002	0.000	0.003	0.000	0.014	0.009	0.000
TOTAL	12	0.003	0.001	0.004	0.000	0.008	0.210	0.686	0.064	0.000

ALL FIGURES IN MU_s

Date	Shedding due to Transmission/Grid Constraints in Central Sector Stations / TTC / ATC VIOLATION				TOTAL	TOTAL SHEDDING DUE TO GRID RESTRICTIONS	Due to T&D Constraints				
	BSES		NDPL	NDMC			DTL				
	BYPL	BRPL					BSES		NDPL	NDMC	MES
			BYPL	BRPL							
1	12	13	14	15	16=8to15	17=16+7	18	19	20	21	22
01-Aug-13	0.000	0.000	0.000	0.000	0.010	0.011	0.000	0.034	0.062	0.000	0.000
02-Aug-13	0.000	0.000	0.000	0.000	0.000	0.000	0.004	0.023	0.053	0.000	0.000
03-Aug-13	0.000	0.000	0.000	0.000	0.000	0.000	1.053	0.028	0.006	0.021	0.000
04-Aug-13	0.000	0.000	0.000	0.000	0.000	0.000	0.007	0.077	0.004	0.000	0.000
05-Aug-13	0.000	0.000	0.000	0.000	0.191	0.191	0.000	0.075	0.000	0.000	0.000
06-Aug-13	0.000	0.000	0.000	0.000	0.000	0.000	0.000	0.000	0.002	0.000	0.000
07-Aug-13	0.000	0.000	0.000	0.000	0.000	0.000	0.020	0.000	0.005	0.045	0.000
08-Aug-13	0.000	0.000	0.000	0.000	0.070	0.071	0.000	0.000	0.000	0.000	0.000
09-Aug-13	0.000	0.000	0.000	0.000	0.000	0.000	0.000	0.000	0.004	0.000	0.000
10-Aug-13	0.000	0.000	0.000	0.000	0.000	0.000	0.000	0.000	0.000	0.000	0.000
11-Aug-13	0.000	0.000	0.000	0.000	0.000	0.000	0.000	0.000	0.011	0.000	0.000
12-Aug-13	0.000	0.000	0.000	0.000	0.000	0.000	0.000	0.000	0.002	0.000	0.000
13-Aug-13	0.000	0.000	0.000	0.000	0.000	0.000	0.000	0.000	0.000	0.000	0.000
14-Aug-13	0.000	0.000	0.000	0.000	0.000	0.000	0.000	0.000	0.014	0.000	0.000
15-Aug-13	0.000	0.000	0.000	0.000	0.000	0.000	0.006	0.000	0.002	0.000	0.000
16-Aug-13	0.000	0.000	0.000	0.000	0.000	0.000	0.000	0.049	0.000	0.000	0.000
17-Aug-13	0.000	0.000	0.000	0.000	0.000	0.000	0.000	0.000	0.000	0.000	0.000
18-Aug-13	0.000	0.000	0.000	0.000	0.000	0.000	0.023	0.027	0.005	0.000	0.000
19-Aug-13	0.000	0.000	0.000	0.000	0.000	0.000	0.000	0.000	0.000	0.000	0.000
20-Aug-13	0.000	0.000	0.000	0.000	0.000	0.000	0.000	0.000	0.000	0.000	0.000
21-Aug-13	0.000	0.000	0.000	0.000	0.000	0.001	0.048	0.000	0.000	0.000	0.000
22-Aug-13	0.000	0.000	0.000	0.000	0.018	0.018	0.000	0.000	0.038	0.000	0.000
23-Aug-13	0.000	0.000	0.000	0.000	0.406	0.406	0.000	0.000	0.003	0.000	0.000
24-Aug-13	0.000	0.000	0.000	0.000	0.000	0.000	0.000	0.009	0.000	0.000	0.000
25-Aug-13	0.000	0.000	0.000	0.000	0.000	0.000	0.000	0.000	0.044	0.000	0.000
26-Aug-13	0.000	0.000	0.000	0.000	0.163	0.163	0.087	0.000	0.000	0.012	0.000
27-Aug-13	0.000	0.000	0.000	0.000	0.000	0.000	0.000	0.000	0.000	0.000	0.000
28-Aug-13	0.000	0.000	0.000	0.000	0.000	0.002	0.000	0.079	0.000	0.000	0.000
29-Aug-13	0.000	0.000	0.000	0.000	0.079	0.079	0.000	0.000	0.000	0.000	0.000
30-Aug-13	0.000	0.000	0.000	0.000	0.000	0.000	0.000	0.000	0.000	0.000	0.000
31-Aug-13	0.000	0.000	0.000	0.000	0.023	0.026	0.000	0.000	0.000	0.000	0.000
TOTAL	0.000	0.000	0.000	0.000	0.960	0.968	1.248	0.401	0.255	0.078	0.000

ALL FIGURES IN MUs

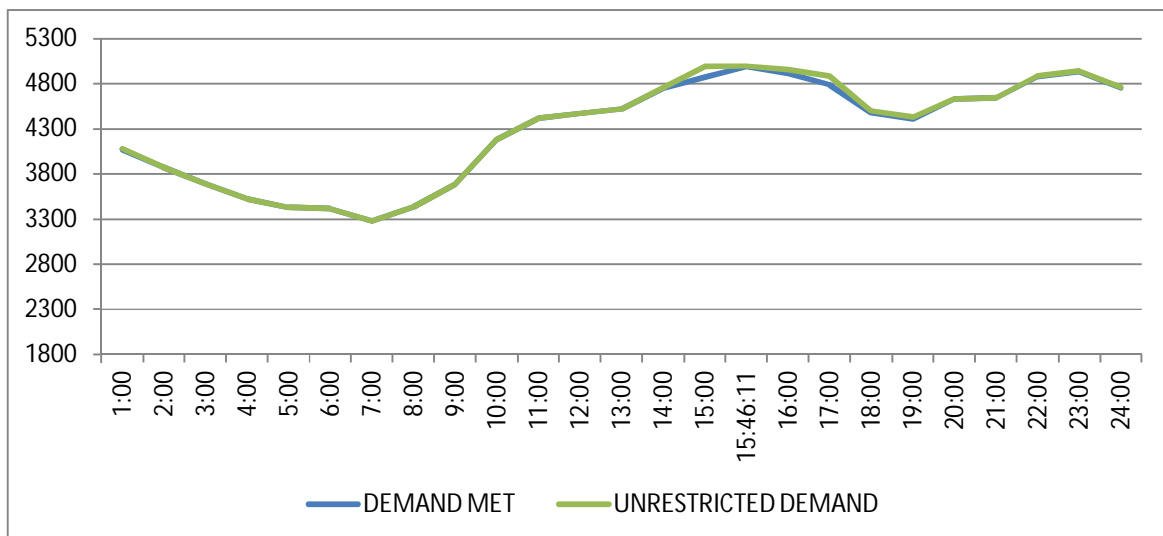
DATE	DUE TO T&D CONSTRAINTS				OTHER AGENCIES LIKE GENCO, BBMB, BTPS ETC.	THEFT PRONE SHEDDING			TOTAL SHEDDING DUE TO T&D CONSTS. & THEFT PRONE	GRAND TOTAL
	DISCOMS					BSES		NDPL		
	BSES		NDPL	NDMC		BSES				
	BYPL	BRPL				BYPL	BRPL			
1	23	24	25	26	27	28	29	30=18 to29	31=30+17	
01-Aug-13	0.000	0.113	0.000	0.000	0.000	0.000	0.000	0.001	0.210	0.221
02-Aug-13	0.000	0.017	0.005	0.000	0.000	0.000	0.000	0.002	0.104	0.104
03-Aug-13	0.014	0.012	0.003	0.000	0.002	0.000	0.000	0.000	1.139	1.139
04-Aug-13	0.000	0.012	0.000	0.000	0.000	0.000	0.000	0.000	0.100	0.100
05-Aug-13	0.005	0.022	0.002	0.000	0.000	0.000	0.000	0.000	0.104	0.295
06-Aug-13	0.000	0.016	0.014	0.000	0.000	0.000	0.000	0.000	0.032	0.032
07-Aug-13	0.011	0.000	0.001	0.000	0.000	0.000	0.000	0.000	0.082	0.082
08-Aug-13	0.000	0.114	0.000	0.000	0.000	0.000	0.000	0.000	0.114	0.185
09-Aug-13	0.012	0.001	0.000	0.003	0.000	0.000	0.000	0.000	0.020	0.020
10-Aug-13	0.000	0.000	0.000	0.000	0.000	0.000	0.000	0.000	0.000	0.000
11-Aug-13	0.000	0.082	0.001	0.000	0.000	0.000	0.000	0.000	0.094	0.094
12-Aug-13	0.000	0.000	0.007	0.000	0.000	0.000	0.000	0.000	0.009	0.009
13-Aug-13	0.000	0.000	0.009	0.000	0.000	0.000	0.000	0.000	0.009	0.009
14-Aug-13	0.013	0.000	0.000	0.000	0.001	0.000	0.000	0.000	0.028	0.028
15-Aug-13	0.000	0.000	0.011	0.000	0.005	0.000	0.000	0.000	0.024	0.024
16-Aug-13	0.004	0.004	0.003	0.000	0.000	0.000	0.000	0.000	0.060	0.060
17-Aug-13	0.000	0.023	0.000	0.000	0.000	0.000	0.000	0.000	0.023	0.023
18-Aug-13	0.000	0.000	0.000	0.000	0.000	0.000	0.000	0.000	0.055	0.055
19-Aug-13	0.000	0.003	0.001	0.000	0.000	0.000	0.000	0.000	0.004	0.004
20-Aug-13	0.009	0.087	0.000	0.000	0.000	0.000	0.000	0.000	0.096	0.096
21-Aug-13	0.005	0.088	0.001	0.000	0.000	0.000	0.000	0.000	0.142	0.143
22-Aug-13	0.000	0.051	0.011	0.000	0.000	0.000	0.000	0.000	0.100	0.118
23-Aug-13	0.004	0.006	0.001	0.000	0.000	0.000	0.000	0.000	0.014	0.420
24-Aug-13	0.004	0.051	0.001	0.000	0.000	0.000	0.000	0.000	0.065	0.065
25-Aug-13	0.000	0.028	0.001	0.000	0.001	0.000	0.000	0.000	0.074	0.074
26-Aug-13	0.000	0.148	0.005	0.000	0.000	0.000	0.000	0.000	0.252	0.415
27-Aug-13	0.007	0.106	0.002	0.000	0.000	0.000	0.000	0.000	0.115	0.115
28-Aug-13	0.000	0.005	0.000	0.000	0.000	0.000	0.000	0.000	0.084	0.086
29-Aug-13	0.027	0.011	0.010	0.000	0.000	0.000	0.000	0.000	0.048	0.127
30-Aug-13	0.000	0.074	0.002	0.000	0.000	0.000	0.000	0.000	0.076	0.076
31-Aug-13	0.000	0.040	0.008	0.000	0.002	0.000	0.000	0.000	0.050	0.076
TOTAL	0.115	1.114	0.099	0.003	0.011	0.000	0.000	0.003	3.327	4.295

DATE	(NET CONS.)	MAXL DEMAND MET DURING THE DAY	TIME OF OCCURRENCE OF MAX DEMAND	SHEDDING AT THIS TIME	UN-RESTRICTED DEMAND	MAXIMUM UN-RESTRICTED DEMAND DURING THE DAY	TIME OF MAX. UN-REST. DEMAND	DEMAND AT THAT TIME	SHEDDING AT THAT TIME
	In Mus.	IN MW	IN HRS.	IN MW	IN MW	IN MW	HRS.	IN MW	IN MW
1	32	33	34	35	36=33+35	37=39+40	38	39	40
01-Aug-13	92.239	4703	15:21:36	0	4703	4703	15:21:36	4703	0
02-Aug-13	92.888	4836	22:46:32	2	4838	4838	22:46:32	4836	2
03-Aug-13	91.460	4781	22:56:04	0	4781	4781	22:56:04	4781	0
04-Aug-13	92.233	4928	22:56:02	30	4958	4958	22:56:02	4928	30
05-Aug-13	95.642	4723	00:05:16	11	4734	4734	00:05:16	4723	11
06-Aug-13	88.598	4412	00:00:12	0	4412	4412	00:00:12	4412	0
07-Aug-13	84.709	4281	22:29:04	0	4281	4281	22:29:04	4281	0
08-Aug-13	85.491	4190	16:04:44	0	4190	4190	16:04:44	4190	0
09-Aug-13	78.162	3863	00:00:10	0	3863	3863	00:00:10	3863	0
10-Aug-13	79.161	3896	19:58:44	0	3896	3896	19:58:44	3896	0
11-Aug-13	78.185	4116	22:46:47	0	4116	4116	22:46:47	4116	0
12-Aug-13	86.309	4436	22:36:24	0	4436	4436	22:36:24	4436	0
13-Aug-13	88.897	4394	15:23:27	0	4394	4394	15:23:27	4394	0
14-Aug-13	87.524	4381	15:30	0	4381	4381	15:30	4381	0
15-Aug-13	69.431	4013	00:02:02	0	4013	4013	00:02:02	4013	0
16-Aug-13	79.503	4119	15:26:08	0	4119	4119	15:26:08	4119	0
17-Aug-13	78.075	3844	12:33:56	5	3849	3849	12:33:56	3844	5
18-Aug-13	74.577	3810	22:46:41	0	3810	3810	22:46:41	3810	0
19-Aug-13	81.695	4133	15:48:42	0	4133	4133	15:48:42	4133	0
20-Aug-13	76.305	3854	12:20:45	8	3862	3862	12:20:45	3854	8
21-Aug-13	80.174	4230	15:29:22	0	4230	4230	15:29:22	4230	0
22-Aug-13	82.237	4217	15:35:17	0	4217	4217	15:35:17	4217	0
23-Aug-13	87.561	4480	15:39:19	11	4491	4491	15:39:19	4480	11
24-Aug-13	89.134	4595	22:38:16	10	4605	4605	22:38:16	4595	10
25-Aug-13	89.071	4624	22:15:53	0	4624	4624	22:15:53	4624	0
26-Aug-13	95.058	4988	15:46:11	5	4993	4993	15:46:11	4988	5
27-Aug-13	96.289	4907	22:27:57	2	4909	4909	22:27:57	4907	2
28-Aug-13	87.742	4711	00:00:03	0	4711	4711	00:00:03	4711	0
29-Aug-13	90.561	4724	23:30	3	4727	4760	23:00	4715	45
30-Aug-13	90.403	4605	00:01:00	0	4605	4605	00:01:00	4605	0
31-Aug-13	86.604	4265	22:51:56	0	4265	4265	22:51:56	4265	0
TOTAL	2655.918	4988 26.08.2013	15:46:11	5	4993 26.08.2013	4993	15:46:11	4988	5

10 **LOAD PATTERN OF DELHI ON THE DAY OF PEAK DEMAND MET DURING AUGUST 2013 ON 26.08.2013- 4988MW AT 15.46.11HRS.**

All figures in MW

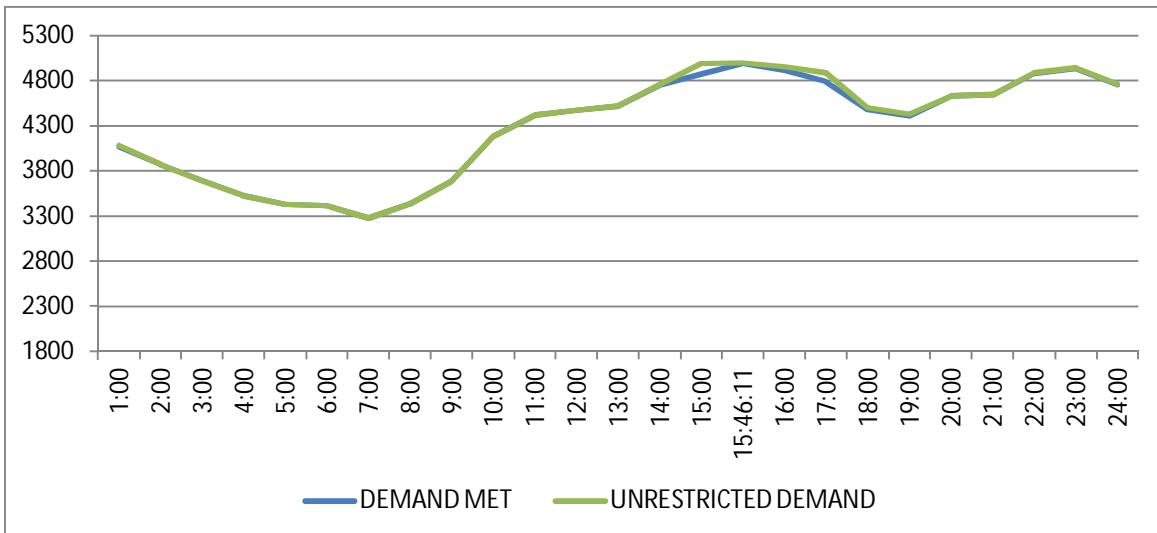
Hrs.	Demand	Load Shedding	Un-Restricted Demand
1:00	4066	13	4079
2:00	3870	0	3870
3:00	3688	0	3688
4:00	3522	0	3522
5:00	3431	0	3431
6:00	3414	0	3414
7:00	3276	0	3276
8:00	3432	0	3432
9:00	3680	0	3680
10:00	4180	0	4180
11:00	4412	0	4412
12:00	4472	0	4472
13:00	4518	3	4521
14:00	4749	6	4755
15:00	4867	119	4986
15:46:11	4988	5	4993
16:00	4911	43	4954
17:00	4785	96	4881
18:00	4478	22	4500
19:00	4407	19	4426
20:00	4629	0	4629
21:00	4646	0	4646
22:00	4878	3	4881
23:00	4930	7	4937
24:00	4752	6	4758
TOTAL	95.058	0.415	95.473



11 LOAD PATTERN OF DELHI ON THE DAY OF MAXIMUM UN-RESTRICTED DEMAND DURING AUGUST 2013 ON 26.08.2013- 4993MW at 15.46.11HRS.

All figures in MW

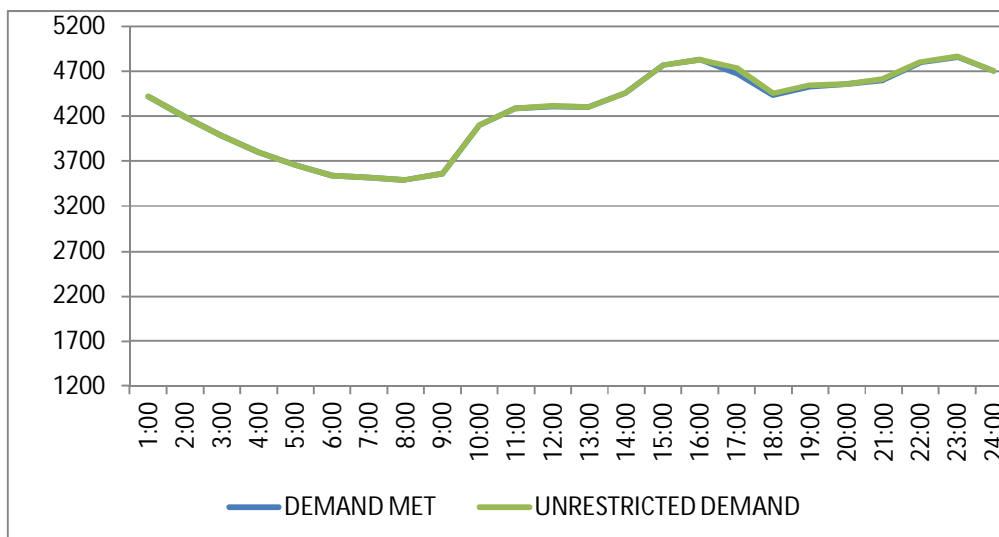
Hrs.	Demand	Load Shedding	Un-Restricted Demand
1:00	4066	13	4079
2:00	3870	0	3870
3:00	3688	0	3688
4:00	3522	0	3522
5:00	3431	0	3431
6:00	3414	0	3414
7:00	3276	0	3276
8:00	3432	0	3432
9:00	3680	0	3680
10:00	4180	0	4180
11:00	4412	0	4412
12:00	4472	0	4472
13:00	4518	3	4521
14:00	4749	6	4755
15:00	4867	119	4986
15:46:11	4988	5	4993
16:00	4911	43	4954
17:00	4785	96	4881
18:00	4478	22	4500
19:00	4407	19	4426
20:00	4629	0	4629
21:00	4646	0	4646
22:00	4878	3	4881
23:00	4930	7	4937
24:00	4752	6	4758
TOTAL	95.058	0.415	95.473



12 LOAD PATTERN OF DELHI ON THE DAY OF MAXIMUM ENERGY CONSUMED DURING AUGUST 2013 – 27.08.2013 – 96.289 Mus

All figures in MW

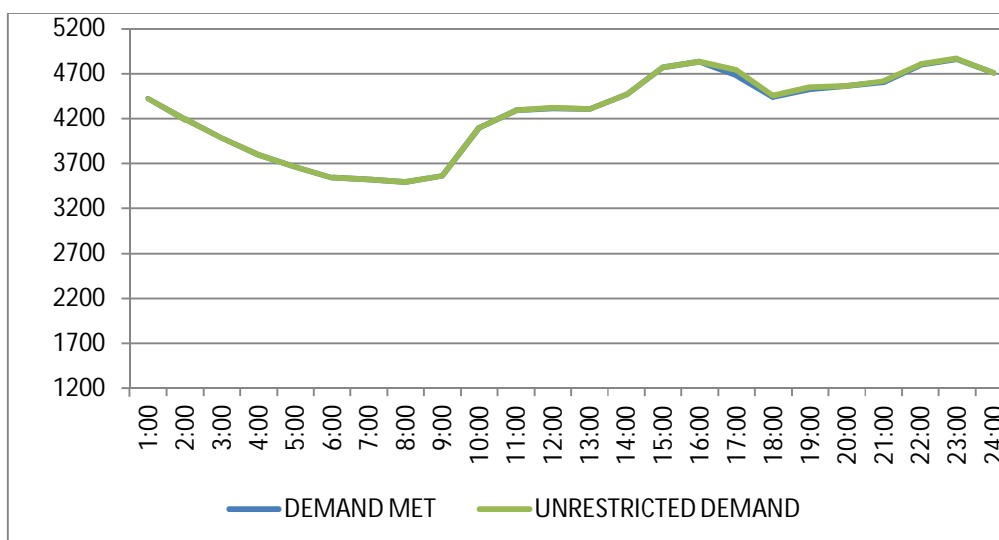
Hrs.	Demand	Load Shedding	Un-Restricted Demand
1:00	4421	0	4421
2:00	4193	0	4193
3:00	3987	0	3987
4:00	3798	0	3798
5:00	3660	0	3660
6:00	3545	0	3545
7:00	3521	0	3521
8:00	3491	0	3491
9:00	3566	0	3566
10:00	4095	0	4095
11:00	4291	0	4291
12:00	4309	13	4322
13:00	4302	2	4304
14:00	4466	0	4466
15:00	4771	0	4771
16:00	4830	0	4830
17:00	4682	59	4741
18:00	4439	16	4455
19:00	4530	16	4546
20:00	4564	0	4564
21:00	4606	8	4614
22:00	4798	4	4802
23:00	4858	11	4869
24:00	4706	0	4706
TOTAL	96.289	0.115	96.404



13 LOAD PATTERN OF DELHI ON THE DAY OF MAXIMUM UNRESTRICTED ENERGY DEMAND DURING AUGUST 2013 – 27.08.2013 – 96.289 Mus

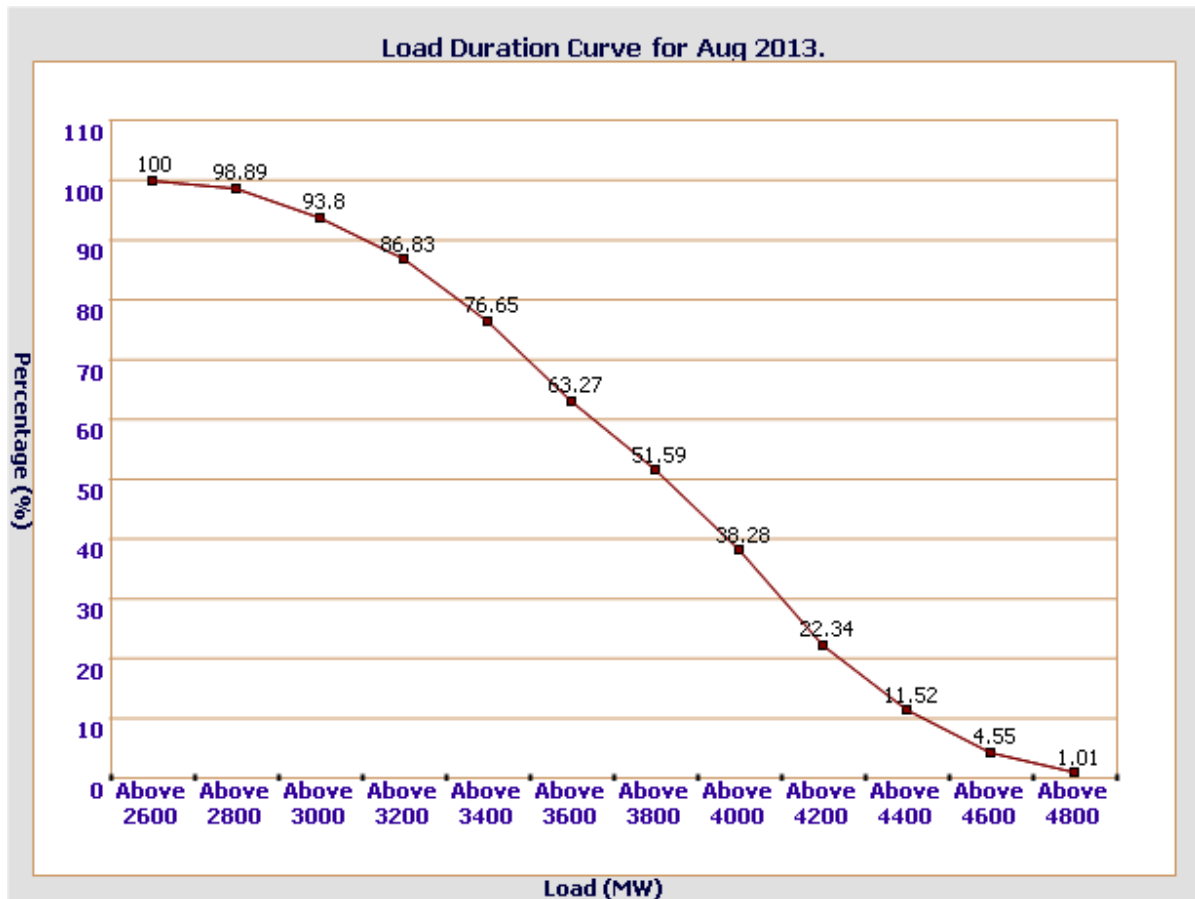
All figures in MW

Hrs.	Demand	Load Shedding	Un-Restricted Demand
1:00	4421	0	4421
2:00	4193	0	4193
3:00	3987	0	3987
4:00	3798	0	3798
5:00	3660	0	3660
6:00	3545	0	3545
7:00	3521	0	3521
8:00	3491	0	3491
9:00	3566	0	3566
10:00	4095	0	4095
11:00	4291	0	4291
12:00	4309	13	4322
13:00	4302	2	4304
14:00	4466	0	4466
15:00	4771	0	4771
16:00	4830	0	4830
17:00	4682	59	4741
18:00	4439	16	4455
19:00	4530	16	4546
20:00	4564	0	4564
21:00	4606	8	4614
22:00	4798	4	4802
23:00	4858	11	4869
24:00	4706	0	4706
TOTAL	96.289	0.115	96.404



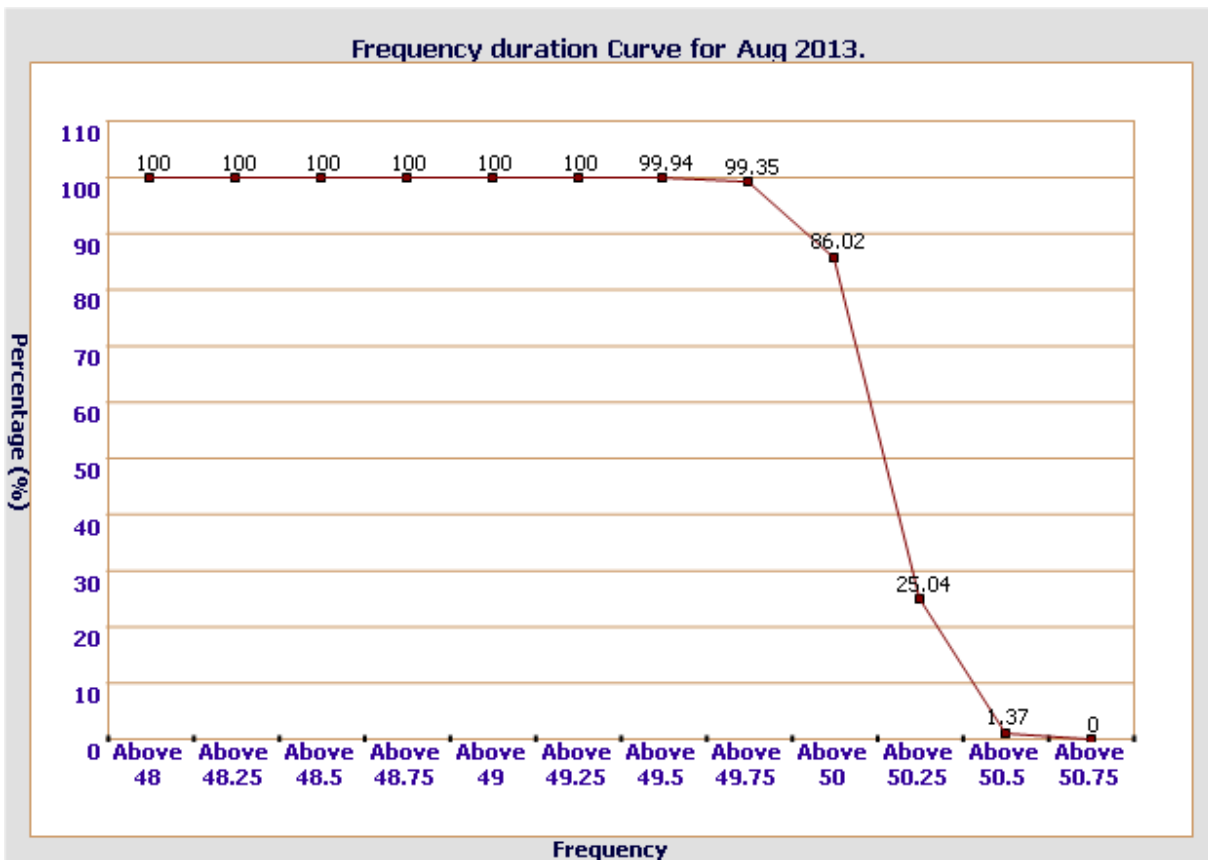
14 LOAD DURATION CURVE FOR AUGUST 2013

Load in MW	Percentage of Time
Above 2600	100 %
Above 2800	98.89 %
Above 3000	93.8 %
Above 3200	86.83 %
Above 3400	76.65 %
Above 3600	63.27 %
Above 3800	51.59 %
Above 4000	38.28 %
Above 4200	22.34 %
Above 4400	11.52 %
Above 4600	4.55 %
Above 4800	1.01 %



FREQUENCY ANALYSIS FOR THE MONTH OF AUGUST 2013

Frequency Range in Hz.	Percentage of time
Above 49.25	100 %
Above 49.5	99.94 %
Above 49.75	99.35 %
Above 50	86.02 %
Above 50.25	25.04 %
Above 50.5	1.37 %
Above 50.75	0 %



16 VOLTAGE PROFILE OF 220 KV SUB-STATIONS IN DELHI DURING AUGUST 2013

All figures in kV

Date	NARELA		GAZIPUR	
	Max	Min	Max	Min
01-Aug-13	233.18	219.12	229.95	216.41
02-Aug-13	230.60	218.86	228.02	217.06
03-Aug-13	229.18	--	226.60	208.29
04-Aug-13	232.02	219.76	226.21	211.12
05-Aug-13	228.79	218.35	223.76	212.41
06-Aug-13	234.08	222.09	225.44	217.06
07-Aug-13	233.31	--	225.57	211.12
08-Aug-13	233.69	222.34	224.15	211.90
09-Aug-13	237.05	224.66	228.66	217.18
10-Aug-13	237.30	--	228.66	212.03
11-Aug-13	235.37	224.66	227.37	216.93
12-Aug-13	235.37	219.76	226.08	207.51
13-Aug-13	233.95	220.92	224.41	214.73
14-Aug-13	--	--	--	--
15-Aug-13	238.85	216.54	228.79	217.31
16-Aug-13	237.30	223.12	227.24	215.12
17-Aug-13	237.17	220.54	229.18	213.70
18-Aug-13	237.30	225.05	229.95	214.09
19-Aug-13	237.95	--	225.95	212.80
20-Aug-13	237.95	224.92	228.66	217.70
21-Aug-13	236.92	220.92	225.57	212.80
22-Aug-13	237.17	220.54	226.73	212.15
23-Aug-13	234.60	215.77	223.12	205.45
24-Aug-13	229.31	215.25	221.57	209.45
25-Aug-13	230.60	220.54	222.21	210.61
26-Aug-13	231.37	214.99	222.86	205.06
27-Aug-13	231.24	210.74	220.28	205.96
28-Aug-13	231.50	220.54	222.21	211.51
29-Aug-13	232.40	216.41	223.38	210.61
30-Aug-13	233.05	218.60	222.34	213.19
31-Aug-13	232.40	216.02	223.63	212.67

17 VOLTAGE PROFILE OF 400 KV SUB-STATIONS IN DELHI DURING AUGUST 2013
All figures in kV

Date	400kV Bamnauli Grid Sub-Station				
	Max KV	Max Time	Min KV	Min Time	Average KV
01-Aug-13	414.81	06.05.40	390.19	14.43.13	403.24
02-Aug-13	410.83	06.18.27	392.07	15.45.36	401.24
03-Aug-13	409.89	06.55.06	386.91	14.28.25	399.50
04-Aug-13	413.87	18.01.54	391.60	21.10.26	403.32
05-Aug-13	408.72	18.50.22	393.94	14.45.55	400.15
06-Aug-13	415.98	06.07.33	399.34	12.42.20	407.52
07-Aug-13	414.34	04.08.08	394.88	19.52.36	404.68
08-Aug-13	414.58	04.01.54	394.41	19.39.36	404.45
09-Aug-13	416.69	04.11.33	397.93	19.45.08	400.09
10-Aug-13	418.56	04.03.06	393.94	12.21.08	405.71
11-Aug-13	414.81	06.09.01	398.40	22.26.46	407.46
12-Aug-13	414.34	06.19.44	390.43	19.49.12	402.80
13-Aug-13	412.00	06.08.14	394.88	19.39.24	403.37
14-Aug-13	--	--	--	--	--
15-Aug-13	416.22	07.59.25	399.57	19.34.28	406.37
16-Aug-13	414.34	--	397.93	19.40.26	407.28
17-Aug-13	419.03	03.17.30	394.88	19.52.23	407.83
18-Aug-13	418.33	06.08.25	395.58	19.46.38	409.09
19-Aug-13	415.05	04.12.01	391.13	19.34.45	404.63
20-Aug-13	418.10	07.10.45	400.27	19.37.13	408.21
21-Aug-13	415.75	08.05.06	393.94	14.25.58	405.58
22-Aug-13	418.10	06.04.55	393.24	19.18.31	406.42
23-Aug-13	413.64	07.06.57	388.08	19.29.44	402.33
24-Aug-13	409.18	07.33.26	388.08	19.16.55	400.54
25-Aug-13	410.36	06.09.03	389.96	19.49.54	401.20
26-Aug-13	408.95	06.33.23	383.86	14.17.13	398.06
27-Aug-13	409.65	08.00.47	388.78	14.52.31	399.38
28-Aug-13	412.33	06.05.24	392.30	19.31.28	403.23
29-Aug-13	413.41	04.02.57	391.13	14.47.25	402.02
30-Aug-13	413.87	08.01.39	396.05	14.56.43	404.28
31-Aug-13	412.00	03.02.24	393.24	19.15.52	403.37

All figures in kV

Date	400kV Bawana Grid Sub-Station				
	Max KV	Max Time	Min KV	Min Time	Average KV
01-Aug-13	419.03	06.08.10	399.10	14.36.53	409.35
02-Aug-13	416.22	07.59.54	401.45	19.35.41	408.67
03-Aug-13	414.34	06.54.05	397.23	14.30.05	406.91
04-Aug-13	419.03	06.38.20	400.51	22.33.10	409.48
05-Aug-13	415.05	18.51.52	401.92	14.19.44	407.37
06-Aug-13	421.61	06.07.53	406.14	14.46.18	413.59
07-Aug-13	420.21	04.03.48	403.09	19.51.56	411.38
08-Aug-13	419.27	04.01.24	402.62	19.42.26	411.43
09-Aug-13	422.79	04.11.13	405.43	19.44.38	415.27
10-Aug-13	423.02	04.03.16	401.68	12.23.38	412.41
11-Aug-13	420.44	06.08.41	405.67	22.28.16	413.47
12-Aug-13	417.16	06.06.23	396.29	18.26.18	409.37
13-Aug-13	418.10	06.08.04	403.32	19.39.14	410.17
14-Aug-13	--	--	--	--	--
15-Aug-13	421.61	10.00.11	407.31	22.06.29	412.88
16-Aug-13	418.56	--	404.26	19.36.56	412.68
17-Aug-13	422.79	04.22.14	403.32	19.53.43	414.33
18-Aug-13	423.25	06.12.25	404.26	19.43.29	414.71
19-Aug-13	420.44	04.11.11	399.81	19.37.15	411.35
20-Aug-13	423.02	07.10.45	406.84	12.31.55	413.74
21-Aug-13	420.91	08.04.45	402.15	14.29.48	411.73
22-Aug-13	421.85	06.04.45	399.57	19.35.22	411.90
23-Aug-13	418.33	07.05.47	395.82	19.14.43	407.59
24-Aug-13	413.41	07.33.46	395.58	19.16.55	406.39
25-Aug-13	415.98	09.09.03	397.23	19.49.54	406.52
26-Aug-13	413.64	06.32.53	391.13	14.17.13	403.95
27-Aug-13	414.58	06.33.32	395.12	14.42.31	405.57
28-Aug-13	416.22	06.05.24	400.74	22.11.07	409.54
29-Aug-13	416.92	04.02.37	398.40	14.39.25	407.84
30-Aug-13	417.86	08.01.29	403.79	14.24.52	409.92
31-Aug-13	415.98	04.01.58	--	10.13.31	411.96

18 DETAILS OF LUMPED CAPACITORS AT NEAREST 220 KV SUBSTATION

Sl. No	SUB-STATION	INSTALLED CAPACITY			
		66KV	33KV	11KV	TOTAL
1	IP YARD		30		30
1	Kamla Market			16.35	16.35
2	Minto Road				0
3	GB Pant Hosp			15.88	15.88
4	Delhi Gate			10.9	10.9
5	Tilakmarg			5.04	5.04
7	Cannaught Place			10.08	10.08
8	Kilokri		10.08	10.48	20.56
9	NDSE				0
11	Nizamuddin				0
12	Exhibition-I				0
13	Exhibition-II				0
14	Defence Colony				0
15	IG Stadium		10.08	5.45	15.53
16	Lajpat Nagar				0
17	IP Estate			10.9	10.9
	LT BYPL				5.6
		0	50.16	85.08	140.84
2	Electric Lane				
1	Electric Lane			5.04	5.04
2	Scindia House			5.04	5.04
3	Raisina Road			10.08	10.08
4	Raja Bazar			10.08	10.08
	LT NDMC				12
		0	0	30.24	42.24
3	RPH Station		20		20
1	Lahori Gate			10.49	10.49
2	Jama Masjid			10.48	10.48
4	Kamla Market				0
5	Minto Road			10.9	10.9
6	GB Pant Hosp				0
7	IG Stadium				0
	LT BYPL				3
		0	20	31.87	54.87
4	Parkstreet S/stn	20	20		40
1	Shastri Park		10.896	5.45	16.346
2	Faiz Road			18.05	18.05
3	Motia Khan			16.3	16.3
4	Prasad Nagar			16.25	16.25
5	Anand Parbat			10.8	10.8
6	Shankar Road			5.04	5.04
7	Rama Road			0	0
8	Baird Road			10.08	10.08
9	Hanuman Road			5.04	5.04
10	Pusa			5.44	5.44
11	Ridge Valley			0	0
12	B. D. Marg			0	0
13	Nirman Bhawan			5.04	5.04
	LT BYPL			0	30.1
		20.00	30.90	97.49	178.486
5	Naraina S/stn		20	5.04	25.04
1	DMS			10.85	10.85
2	Mayapuri		10.87	10.4	21.27
3	Inderpuri		10	4.8	14.8
4	Rewari line				0
5	Khyber Lane		10.05		10.05
6	Kirbi Place		10.05		10.05
7	Payal			7.2	7.2
8	Saraswati Garden			10.88	10.88
		0	60.97	49.17	110.14

Sl. No	SUB-STATION	INSTALLED CAPACITY			
		66KV	33kV	11kV	TOTAL
6	Mehrauli S/stn	80		5.04	85.04
1	Adchini			14.61	14.61
2	Andheria Bagh			10.85	10.85
3	IIT			10.9	10.9
4	JNU		10.03	10.03	20.06
5	Bijwasan			15.47	15.47
6	DC Saket			9.98	9.98
7	Malviya Nagar				0
8	C Dot			10.48	10.48
9	Vasant kunj B-Blk	21.79		10.9	32.69
10	Vasant kunj C-Blk	20.16		10.48	30.64
11	Palam				0
12	IGNOU			5.04	5.04
13	R. K. Puram-I			10.07	10.07
14	Vasant Vihar			19.25	19.25
15	Pusp Vihar			10.44	10.44
16	Bhikaji Cama Place		10.08	10.07	20.15
	LT BRPL				25
		121.95	20.11	163.61	330.67
7	Vasantkunj S/stn	40		5.04	45.04
1	R. K. Puram-II			10.08	10.08
2	Vasant kunj C-Blk				0
3	Vasant kunj D-Blk			9.63	9.63
4	Ridge Valley				0
	LT BRPL				33.2
		40	0	24.75	97.95
8	Okhla S/stn	60	10	5.04	75.04
1	Balaji			10.8	10.8
2	East of Kailash			15.89	15.89
3	Alaknanda			16.3	16.3
4	Malviya Nagar	21.79		10.85	32.64
5	Masjid Moth			16.3	16.3
6	Nehru Place			21.34	21.34
7	Okhla Ph-I	21.79		16.3	38.09
8	Okhla Ph-II		20.93	15.47	36.4
9	Shivalik			10.8	10.8
10	Batra			15.9	15.9
11	VSNL			10.9	10.9
12	Siri Fort			10.49	10.49
13	Tuglakabad			10.85	10.85
	LT BRPL				59
		103.58	30.93	187.23	380.74
9	Lodhi Road S/stn		20		20
1	Defence Colony		14.85		14.85
2	Hudco		10.9		10.9
3	Lajpat Nagar		10.9		10.9
4	Nizamuddin		10.44		10.44
5	Vidyut Bhawan				0
6	Ex. Gr. II				0
7	IHC				0
	LT BRPL				42
		0	67.09	0	109.09
10	Sarita Vihar S/stn	20		5.04	25.04
1	Sarita Vihar			10.07	10.07
2	MCIE			10.06	10.06
3	Mathura Road	20.16		11.69	31.85
4	Jamia Millia			10.89	10.89
5	Sarai Julena		10.08	16.29	26.37
6	Jasola			5.44	5.44
	LT BRPL				23.6
		40.16	10.08	69.48	143.32

Sl. No	SUB-STATION	INSTALLED CAPACITY			
		66KV	33kV	11kV	TOTAL
11	Wazirabad				
1	Bhagirathi		14.4	10.9	25.3
2	Ghonda	21.79	22.56	15.94	60.29
3	Seelam Pur		10.08	21.39	31.47
4	Dwarkapuri			15.46	15.46
5	Nandnagri	20.16		16.35	36.51
6	Yamuna Vihar			16.2	16.2
7	East of Loni Road			10.8	10.8
8	Shastri Park			10.9	10.9
9	Karawal Nagar			5.4	5.4
10	Sonia Vihar			7.2	7.2
	LT BYPL				10
		41.95	47.04	130.54	229.53
12	Geeta Colony				
1	Geeta Colony				0
2	Kanti Nagar			10.49	10.49
3	Kailash Nagar			10.9	10.9
4	Seelam Pur			15.48	15.48
5	Shakar Pur				0
	LT BYPL				5.8
		0	0	36.87	42.67
13	Gazipur S/stn	40		5.04	45.04
1	Dallupura	28.8		10.9	39.7
2	Vivek Vihar			9.57	9.57
3	GT Road			10.85	10.85
4	Kondli	20.16		10.85	31.01
5	MVR-I			10.9	10.9
6	MVR-II	20.16		10.9	31.06
7	PPG Ind. Area			10.06	10.06
	LT BYPL				20.6
		109.12	0	79.07	208.79
14	Patparganj S/stn	40	20	5.04	65.04
1	GH-I	19.89		10.45	30.34
2	GH-II	20.09		10.9	30.99
3	CBD		10.03	15.48	25.51
4	Guru Angad Nagar			15.49	15.49
5	Karkadooma		10.8	10.44	21.24
6	Preet Vihar			10.07	10.07
7	CBD-II			10.8	10.8
8	Shakarpur			10.8	10.8
9	Jhilmil			10.8	10.8
10	Dilshad Garden	20.16		16.35	36.51
11	Khichripur	21.79		10.49	32.28
12	Mother Dairy				0
13	Scope Building				0
14	Vivek Vihar				0
15	Akhardham			14.6	14.6
	LT BYPL				23.3
		121.93	40.83	151.71	337.77
15	Najafgarh S/stn	60		5.04	65.04
1	A4 Paschim Vihar			10.8	10.8
2	Nangloi	21.73		15.84	37.57
3	Nangloi W/W	20.89		10.85	31.74
4	Pankha Road			15.88	15.88
5	Jaffarpur			15.43	15.43
7	Inst. Area Janakpuri			17.6	17.6
8	Paschimpuri		10.05	15.47	25.52
9	Paschim Vihar	41.83		15.43	57.26
10	Mukherjee Park			20.83	20.83
11	Udyog Nagar			10.43	10.43
12	Choukhandi			10.07	10.07
	LT BRPL				27
		144.45	10.05	163.67	345.17

Sl. No	SUB-STATION	INSTALLED CAPACITY			
		66KV	33kV	11kV	TOTAL
16	Pappankalan-I S/stn	20		5.04	25.04
1	Bindapur Grid G-3 PPK	21.73		15.85	37.58
2	Bodella-I	20.1		16.24	36.34
3	Bodella-II	21.73		17.64	39.37
4	DC Janakpuri			10.03	10.03
5	G-2 PPK			10.8	10.8
6	G-5 PPK			15.51	15.51
7	G-6 PPK			5.4	5.4
8	G-15 PPK			10.8	10.8
9	Harinagar	21.18		16.25	37.43
10	Rewari line			5.44	5.44
	LT BRPL				13.5
		104.74	0	129	247.24
17	BBMB Rohtak Road				
1	S.B. Mill			10.07	10.07
2	Rama Road			10.88	10.88
3	Ram Pura			10.48	10.48
4	Rohtak Road			8.04	8.04
5	Vishal			10.4	10.4
6	Tri Nagar			5.44	5.44
7	Madipur			10.43	10.43
8	Sudershan Park			10.08	10.08
9	Kirti Nagar			5.44	5.44
		0	0	81.26	81.26
18	Shalimarbagh S/stn		40	6	46
1	S.G.T. Nagar			5.44	5.44
2	Wazirpur-1			17.18	17.18
3	Wazirpur-2			11.39	11.39
4	Ashok Vihar			5.44	5.44
5	Rani Bagh			10.88	10.88
6	Haiderpur			11.39	11.39
7	SMB FC			5.44	5.44
8	SMB KHOSLA			5.44	5.44
	LT TPDDL				30
		0	40	78.6	148.6
19	Subzimandi S/stn			6	6
1	Shakti Nagar			5.94	5.94
2	Gulabibagh			10.88	10.88
3	Shahzadabagh			13.68	13.68
4	DU			5.44	5.44
5	Tripolia			10.88	10.88
	B. G. Road			5.4	5.4
	LT BYPL				0.9
	LT TPDDL				20
		0	0	58.22	79.12
20	Narela S/stn	40		5.04	45.04
1	A-7 Narela			10.88	10.88
2	AIR Kham pur			6	6
3	Ashok vihar			10.48	10.48
4	Azad Pur			5.44	5.44
5	Tri Nagar			5.44	5.44
6	Badli	20		5.95	25.95
7	DSIDC Narela-1			5.95	5.95
8	GTK			5.44	5.44
9	Jahangirpuri	20	10	0	30
10	Bhalswa			3.6	3.6
	LT TPDDL				10
		80	10	64.22	164.22

Sl. No	SUB-STATION	INSTALLED CAPACITY			
		66KV	33kV	11kV	TOTAL
21	Gopalpur S/stn		30	5.04	35.04
1	Azad Pur			10.88	10.88
2	Hudson Lane			5.44	5.44
3	Wazirabad			2.4	2.4
4	Indra Vihar			5.44	5.44
6	GTK Road			5.94	5.94
7	Jahangirpuri		10	5.95	15.95
8	Civil lines			5.44	5.44
9	Pitam Pura-1			5.44	5.44
10	Pitam Pura-3			5.44	5.44
11	Air Khampur			5.95	5.95
12	SGT Nagar			5.95	5.95
13	Tiggipur			10.88	10.88
	LT TPDDL				29
		0	40	80.19	149.19
22	Rohini S/stn	40		6	46
1	Rohini Sec-22			10.88	10.88
2	Rohini Sec-23	20		5.44	25.44
3	Rohini Sec-24			5.44	5.44
4	Rohini-1			5.44	5.44
5	Rohini-3			5.95	5.95
6	Rohini-4			11.39	11.39
7	Rohini-5			11.39	11.39
8	Rohini-6			5.95	5.95
9	Mangolpuri-1			16.83	16.83
10	Mangolpuri-2	20		5.94	25.94
11	Pitam Pura-1	20		5.04	25.04
12	Pitam Pura-2			10.48	10.48
13	Rohini DC-1			14.4	14.4
	LT TPDDL				30
		100	0	120.57	250.57
23	Kanjhawala S/stn	20		5.04	25.04
1	Bawana Clear Water			10.88	10.88
2	Pooth Khoord			5.44	5.44
		20	0	21.36	41.36
24	BAWANA S/stn				
1	Bawana S/stn No. 6			10.88	10.88
2	Bawana S/stn No. 7				0
		0	0	10.88	10.88
25	Kashmeregate S/stn			5.04	5.04
1	Civil lines			5.44	5.44
2	Town Hall			8.64	8.64
3	Fountain			5.45	5.45
	LT BYPL				2.7
		0	0	24.57	27.27
26	Pappankalan-II				
1	DMRC-I				0
2	DMRC-II				0
27	Trauma Center (AIIMS)				
1	AIIMS		13.26	5.04	18.3
2	Trauma Center			10.08	10.08
3	Netaji Nagar			15.12	15.12
4	Sanjay Camp			10.08	10.08
5	Kidwai Nagar			5.04	5.04
6	SJ Airport			5.04	5.04
	Race Course			5.04	5.04
		0	13.26	55.44	68.7

Sl. No	SUB-STATION	INSTALLED CAPACITY			
		66KV	33kV	11kV	TOTAL
28	MUNDKA				
	Rohini-2			11.39	11.39
	LT BRPL				18.5
		0	0	11.39	29.89
29	DSIDC BAWANA				
	DSIDC NRL-1	20			20
	DSIDC NRL-2			10.88	10.88
		20	0	10.88	30.88
30	RIDGE VALLEY				
	Keventry Diary			10.08	10.08
	Nehru Park			5.04	5.04
	Bapu Dham			10.08	10.08
		0	0	25.2	25.2
31	IP EXTN (PRAGATI)				
	Vidyut Bhawan			10.08	10.08
	Dalhousie Road			5.04	5.04
	School Lane			5.04	5.04
	LT NDMC				12.29
		0	0	20.16	32.45
	TOTAL CAPACITY	1067.9	491.4	2092.7	4139

Utility	HT	LT	Total
BYPL	864	102	966
TPDDL	657	119	776
NDMC	180	24	204
DTL	754	0	754
BRPL	1158	242	1400
RPH	20	0	20
MES	20	0	20
TOTAL	3652	487	4139

20 DETAILS OF BREAK-DOWNS DURING THE MONTH OF AUGUST 2013

SL NO	OCCURRENCE OF BREAK-DOWN		DETAILS OF THE BREAKDOWN	TIME OF RESTORATION		REMARKS
	DATE	TIME		DATE	TIME	
1	01.08.13	14:43	220KVBAWANA- ROHINI CKT-I	01.08.13	15:10	CKT TRIPPED ON 86-A&B AT BAWANA. NO TRIPPING AT ROHINI.
2	01.08.13	15:42	MASJID MOTH 33 KV SIRIFORT	03.08.13	14:20	CKT TRIPPED ON D/P,C-PH,Z-1. Y-PH CB DAMAGED AT MASJID MOTH.
3	01.08.13	15:42	MASJID MOTH 220/33kV 100MVA Tx-II	01.08.13	16:15	33KV I/C-1 TRIPPED ON O/C AND E/F.
4	01.08.13	15:42	MASJID MOTH 220/33kV 100MVA Tx-I	01.08.13	16:15	33KV I/C-1 TRIPPED ON O/C AND E/F.
5	01.08.13	19:32	220kV BAWANA-DSIIDC BAWANA CKT-I	01.08.13	18:00	AT DSIDC BAWANA CKT TRIPPED ON D/P,AB&C-PH. AT BAWANA CKT TRIPPED ON D/P,Z-1,DIST-0.78 KM. CKT LINE ISOLATOR MALE & FEMALE CONTACT BURNT. Y-PH JUMPER SNAPPED AT TOWER NO-218.
6	02.08.13	1:45	KANJHAWALA 66/11kV, 20MVA Tx-I	02.08.13	19:40	TX TRIPPED ON DIFFERENTIAL ALONG WITH 11KV I/C-1.
7	02.08.13	3:54	220KVBAWANA- ROHINI CKT-I	02.08.13	4:00	AT BAWANA CKT TRIPPED ON D/P, A&B-PH, 186. NO TRIPPING AT ROHINI.
8	02.08.13	4:27	220KVBAWANA- ROHINI CKT-I	02.08.13	4:38	AT BAWANA CKT TRIPPED ON 186. NO TRIPPING AT ROHINI.
9	02.08.13	5:15	220KVBAWANA- ROHINI CKT-I	02.08.13	16:02	CKT TRIPPED ON 186. NO TRIPPING AT ROHINI. PROBLEM IN 186 RELAY.
10	02.08.13	5:38	400kV Mandola-Bawana Ckt-II	02.08.13	22:58	AT BAWANA CKT TRIPPED ON CB AUTO TRIP, B-PH OVER VOLTAGE(59B), AUXILIARY CARRIER RELAY 30 CHANNEL-1&2 186 A&B. AT MANDOLA CKT TRIPPED ON 85LO, 86 A&B.
11	02.08.13	9:25	220kV OKHLA - BTPS CKT.- I	02.08.13	10:07	AT BTPS CKT TRIPPED ON D/P, B&Y-PH, DIST-1 KM. NO TRIPPING AT OKHLA.
12	02.08.13	17:11	220KV WAZIRABAD - MANDOLA CKT-III	02.08.13	20:18	AT WAZIRABAD CKT TRIPPED ON D/P, Z-1, AY&B-PH. AT MANDOLA CKT TRIPPED ON D/P, Z-1, DIST- 12.92 KM.
13	03.08.13	2:20	RIDGE VALLEY 220/66kV 160MVA Tx-I	03.08.13	2:52	TX TRIPPED ON E/F, 86 A&B. 66KV I/C-1 TRIPPED ON 86B.
14	03.08.13	2:20	220kV BAMNAULI-NARAINA CKT-II	03.08.13	2:51	AT BAMNAULI CKT TRIPPED ON D/P, B-PH,CB POLE DISCREPANCY 47 TX, 186 A&B. AT NARAINA CKT TRIPPED ON D/P, 210C, DIRECT V T FAIL , AB&C-PH, 186 A&B.
15	03.08.13	2:20	220KV NARAINA-RIDGE VALLEY CKT-I	03.08.13	2:51	AT NARAINA CKT TRIPPED ON TEF TRIP, COMM. FAIL, A/R, 3-PH TRIP, 186. AT RIDGE VALLEY CKT TRIPPED ON E/F, 86 A&B.
16	03.08.13	10:56	WAZIRABAD 66/11kV, 20MVA Tx-IV	03.08.13	13:13	TX TRIPPED ON LBB,96.
17	03.08.13	10:56	WAZIRABAD 66/11kV, 20MVA Tx-III	03.08.13	13:17	TX TRIPPED ON LBB.
18	03.08.13	10:56	WAZIRABAD 220/66kV 100MVA Tx-I	03.08.13	13:07	TX TRIPPED ON LBB,96.
19	03.08.13	10:56	WAZIRABAD 220/66kV 100MVA Tx-II	03.08.13	14:07	TX TRIPPED ON LBB,96.
20	03.08.13	10:56	WAZIRABAD 220/66kV 100MVA Tx-III	03.08.13	13:07	TX TRIPPED ON LBB,96.
21	03.08.13	10:56	220kV WAZIRABAD-GEETA COLONY CKT-I	03.08.13	13:25	AT WZB CKT TRIPPED ON LBB & 96. NO TRIPPING AT GEETA COLONY.
22	03.08.13	10:56	220kV WAZIRABAD-GEETA COLONY CKT-II	03.08.13	13:25	AT WZB CKT TRIPPED ON LBB & 96. NO TRIPPING AT GEETA COLONY.
23	03.08.13	10:56	220KV WAZIRABAD - MANDOLA CKT-II	03.08.13	12:20	AT WZB CKT TRIPPED ON LBB & 96. NO TRIPPING AT MANDOLA.
24	03.08.13	10:56	220KV WAZIRABAD - MANDOLA CKT-I	03.08.13	12:20	AT WZB CKT TRIPPED ON LBB & 96. NO TRIPPING AT MANDOLA.
25	03.08.13	10:56	220kV WAZIRABAD - KASHMEREGATE CKT-I	03.08.13	13:25	AT WZB CKT TRIPPED ON LBB & 96. NO TRIPPING AT KASHMERE GATE.
26	03.08.13	10:56	220kV WAZIRABAD - KASHMEREGATE CKT-II	03.08.13	13:28	AT WZB CKT TRIPPED ON LBB & 96. NO TRIPPING AT KASHMERE GATE.
27	03.08.13	10:56	220KV WAZIRABAD - MANDOLA CKT-IV	03.08.13	13:39	AT WZB CKT TRIPPED ON LBB & 96. NO TRIPPING AT MANDOLA.
28	03.08.13	14:12	NARAINA 220/33kV 100MVA Tx-II	03.08.13	14:14	WHILE NORMALIZING 33KV KHAIBER LANE CKT-2, 33KV I/C-2 TRIPPED ON O/C.
29	04.08.13	1:46	BAWANA 400/220kV 315MVA ICT-I	04.08.13	3:58	220KV I/C-1 TRIPPED ON CB AUTO TRIP.
30	04.08.13	14:35	220kV GOPALPUR-SUBZI MANDI CKT-I	04.08.13	15:10	AT GOPALPUR CKT TRIPPED ON D/P,Z-1,DIST-2.3 KM. NO TRIPPING AT SUBZIMANDI.
31	04.08.13	16:09	220kV GEETA COLONY- PATPARGANJ CKT-I	04.08.13	16:22	AT GEETA COLONY CKT TRIPPED ON D/P,Z-1,DIST-1.884 KM. AT PPG CKT TRIPPED ON D/P,Z-1,186,DIST-3.1 KM.
32	04.08.13	16:09	GEETA COLONY 220/33kV 100MVA Tx-II	04.08.13	16:23	33KV I/C-2 TRIPPED ON 30CB AUTO TRIP, 86.

SL NO	OCCURRENCE OF BREAK-DOWN		DETAILS OF THE BREAKDOWN	TIME OF RESTORATION		REMARKS
	DATE	TIME		DATE	TIME	
33	04.08.13	19:55	LODHI RD 33/11kV, 20MVA Tx-I	04.08.13	19:58	TX TRIPPED ON O/C, 86 ALONG WITH 11KV DEFENSE COLONY FEEDER.
34	04.08.13	13:01	220kV OKHLA - BTPS CKT. - II	04.08.13	17:43	AT MEHRAULI CKT TRIPPED ON D/P, AB&C-PH, 186, DIST-13.3 KM. AT BTPS CKT TRIPPED ON R-PH, E/F.
35	05.08.13	10:20	220kV OKHLA - BTPS CKT. - II	05.08.13	12:32	AT BTPS CKT TRIPPED ON B-PH, E/F. NO TRIPPING AT OKHLA.
36	06.08.13	9:05	GAZIPUR 220/66kV 100MVA Tx-II	06.08.13	9:45	TX TRIPPED ON RST, RXG. 66KV I/C-2 TRIPPED ON REF, DIFFERENTIAL PROTECTION.
37	06.08.13	16:53	220kV SARITA VIHAR - BTPS CKT.-I	06.08.13	20:54	AT SARITA VIHAR CKT TRIPPED ON D/P,Z-2,B-PH,186 A&B. AT BTPS CKT TRIPPED ON D/P,Z-1,DIST-01 KM.
38	07.08.13	4:03	PARKSTREET 33kV BAIRD ROAD CKT-II	07.08.13	7:30	WHILE NORMALIZING SHUTDOWN, THE POST INSULATOR OF BUS-1 ISOLATOR OF ALL PHASES DAMAGED AND 33KV I/C-1&2 TRIPPED ON O/C.
39	07.08.13	4:03	PARKSTREET 220/33kV 100MVA Tx-I	07.08.13	4:40	33KV I/C-1 TRIPPED ON O/C.
40	07.08.13	4:03	PARKSTREET 220/33kV 100MVA Tx-II	07.08.13	4:40	33KV I/C-2 TRIPPED ON O/C.
41	07.08.13	7:10	SUBZI MANDI 33/11kV, 16MVA Tx-I	07.08.13	9:30	TX TRIPPED ON DIFFERENTIAL RY&B-PHASE.
42	07.08.13	10:09	KASHMIRI GATE 220/33kV 100MVA Tx-I	07.08.13	10:10	33KV I/C-1 TRIPPED ON O/C,E/F.
43	07.08.13	14:25	ELECTRIC LANE 220/33kV 100MVA Tx-I	14.08.13	14:08	TAP CHANGER DIAPHRAGM DAMAGED.
44	07.08.13	21:25	220KVBAWANA- ROHINI CKT-I	07.08.13	22:03	AT BAWANA CKT TRIPPED ON 186 A&B. NO TRIPPING AT ROHINI.
45	09.08.13	7:55	SHALIMAR BAGH 33/11kV, 16MVA Tx-I	09.08.13	12:50	TX TRIPPED ON DIFFERENTIAL.
46	09.08.13	9:56	220KVBAWANA- ROHINI CKT-I	09.08.13	10:09	AT BAWANA CKT TRIPPED ON 186. NO TRIPPING AT ROHINI
47	09.08.13	10:31	220KVBAWANA- ROHINI CKT-I	09.08.13	17:55	AT BAWANA CKT TRIPPED ON 186. NO TRIPPING AT ROHINI.
48	11.08.13	8:57	220kV GEETA COLONY- PATPARGANJ CKT-I	11.08.13	9:09	AT GEETA COLONY CKT TRIPPED ON D/P,Z-1,DIST-0.831 KM AT PPG CKT TRIPPED ON O/C, AB&C-PH, 186
49	11.08.13	12:36	220KVBAWANA- ROHINI CKT-I	11.08.13	12:44	AT BAWANA CKT TRIPPED ON 186A&B. NO TRIPPING AT ROHINI.
50	12.08.13	6:36	400kV Bamnauli-Jhatikara Ckt-II	12.08.13	7:32	AT BAMNAULI CKT TRIPPED ON 186A&B.
51	12.08.13	18:26	400kV Mandola-Bawana Ckt-II	12.08.13	18:46	AT MDL CKT TRIPPED ON POLE DISCREPANCY, D/P, Z-1,R-PH AT BWN CKT TRIPPED ON D/P, Z-1, A-N PHASE.
52	13.08.13	11:40	NARAINA 220/33kV 100MVA Tx-II	13.08.13	11:41	33KV I/C-2 TRIPPED ON O/C.
53	13.08.13	12:26	220kV PRAGATI - I.P.CKT - II	13.08.13	20:12	AT PRAGATI CKT TRIPPED D/P, Z-1, AB&C-PH. NO TRIPPING AT IP. R-PH JUMPER BROKEN NEAR WAVE TRAP AND TOP PHASE JUMPER BROKEN AT TOWER NO-8.
54	14.08.13	12:12	220KVBAWANA- ROHINI CKT-II	14.08.13	12:45	AT BWN CKT TRIPPED ON D/P, A-PH, Z-2. NO TRIPPING AT ROHINI.
55	15.08.13	10:10	220kV GEETA COLONY- PATPARGANJ CKT-I	15.08.13	10:18	AT GEETA COLONY CKT TRIPPED ON D/P, Z-1, DIST-2.741KM NO TRIPPING AT PATPARGANJ.
56	15.08.13	10:29	220kV MAHARANI BAGH - SARITA VIHAR CKT	15.08.13	10:43	AT SARITA VIHAR CKT TRIPPED ON D/P, AB&C-PH, Z-1, DIST-1.037 KM. AT MAHARANIBAGH CKT TRIPPED ON D/P, Z-2, DIST-8.5 KM.
57	15.08.13	13:22	DSIIDC Bawana 220/66kV 100MVA Tx-II	15.08.13	14:07	TX TRIPPED ON 86. 66KV I/C TRIPPED ON 96.
58	15.08.13	13:22	DSIIDC Bawana 220/66kV 100MVA Tx-III	15.08.13	14:07	TX TRIPPED ON 86. 66KV I/C-3 TRIPPED ON 86, 96, E/F.
59	15.08.13	19:05	GAZIPUR 66/11kV, 20MVA Tx-I	15.08.13	19:37	TX TRIPPED ON DIFFERENTIAL, E/F. 11KV I/C-1 TRIPPED ON 86.
60	16.08.13	0:54	LODHI RD 220/33kV 100MVA Tx-I	16.08.13	1:50	TX TRIPPED ON 86B, 186X, AUTO RE-CLOSE. 33KV I/C-1 TRIPPED ON INTER TRIPPING.
61	16.08.13	0:54	LODHI RD 220/33kV 100MVA Tx-II	16.08.13	13:03	TX TRIPPED ON O/C, C-PH, 87T, 67A, AUTO RE-CLOSE. 33KV I/C-1 TRIPPED ON INTER TRIPPING.
62	17.08.13	7:01	PAPPANKALAN-II 220/66kV 100MVA Tx-II	17.08.13	11:15	TX TRIPPED ON LBB PROTECTION, SPR, 86.
63	17.08.13	19:50	SARITA VIHAR 66/11kV, 20MVA Tx-II	17.08.13	22:40	BUCHHOLZ ALARM APPEARED ON TX.
64	18.08.13	7:26	220KV BAWANA -NAJAFGARH CKT	18.08.13	7:40	AT NAJAFGARH CKT TRIPPED ON 86. NO TRIPPING AT BAWANA.
65	18.08.13	7:26	220KV KANJHAWALA-NAJAFGARH CKT	18.08.13	7:40	AT NAJAFGARH CKT TRIPPED ON 86. NO TRIPPING AT BAWANA.
66	18.08.13	11:35	220kV GOPALPUR- MANDOLACKT-II	18.08.13	12:59	AT MDL CKT TRIPPED ON D/P, AUTO TRIP. NO TRIPPING AT GOPALPUR.
67	18.08.13	13:12	220kV DIAL- MEHRAULI CKT-I	18.08.13	18:52	AT MEHRAULI CKT TRIPPED ON D/P, Z-1. AT DIAL CKT TRIPPED ON REC, GR, GE, TR, TFR, B-MAIN, RED, REL, B-PH TRIP, MAIN-2 PROT. TRIP, RED COMMUNICATION FAIL.
68	18.08.13	13:12	220kV DIAL- MEHRAULI CKT-II	18.08.13	18:48	AT MEHRAULI CKT TRIPPED ON D/P, Z-1, DIST-8.4 KM AT DIAL CKT TRIPPED ON DEL B-PH, REL MAIN-2, ZONE-1, REL FUSE FAIL, REL GND, GND. B-PH LINE ISOLATOR CLAMP MELTED AT MEHRAULI.
69	18.08.13	18:29	PATPARGANJ 220/33kV 100MVA Tx-III	19.08.13	11:30	33KV I/C-3 OF TX TRIPPED ON E/F.

SL NO	OCCURRENCE OF BREAK-DOWN		DETAILS OF THE BREAKDOWN	TIME OF RESTORATION		REMARKS
	DATE	TIME		DATE	TIME	
70	18.08.13	18:29	PATPARGANJ 220/33kV 100MVA Tx-IV	18.08.13	19:01	TX TRIPPED ON 80, DC-1, 80 DC-2, 51NX, E/F, 86B. 33KV I/C-4 TRIPPED ON 86.
71	20.08.13	20:25	TRAUMA CENTER 220/33kV 100MVA Tx-II	21.08.13	0:04	OIL SURGE RELAY APPEARED ON TX SO TR MADE MADE OFF.
72	21.08.13	13:07	PAPPANKALAN-I 220/66kV 100MVA Tx-IV	21.08.13	13:33	TX TRIPPED ALONG WITH 66KV BUDELA CKT-1 ON O/C, E/F, 86. 66KV I/C-4 TRIPPED ON INTER-TRIPPING. Y-PH CABLE EARTH LINK 66KV BUDELA CKT-1 FOUND DAMAGED.
73	21.08.13	17:13	400kV Mundka-Jhatikara Ckt-I	21.08.13	17:44	AT MUNDKA CKT TRIPPED ON DIRECT TRIP, CHANNEL-1 & 2. AT JATTIKARA CKT MADE OFF AS SPARKING REPORTED FROM LINE ISOLATOR.
74	21.08.13	19:18	PATPARGANJ 220/33kV 100MVA Tx-I	21.08.13	19:48	33KV I/C-1 TRIPPED ON O/C, R-PH. KITE THREAD FOUND IN YARD.
75	21.08.13	19:18	PATPARGANJ 220/33kV 100MVA Tx-IV	21.08.13	20:05	TX TRIPPED ON 64 RLV, 86. 33KV I/C-1 TRIPPED ON 86. KITE THREAD FOUND IN YARD.
76	21.08.13	19:18	PATPARGANJ 220/33kV 100MVA Tx-III	21.08.13	19:48	33KV I/C-3 TRIPPED ON O/C, E/F. KITE THREAD FOUND IN YARD.
77	22.08.13	0:35	220KVBAWANA- ROHINI CKT-I	22.08.13	0:39	AT BWN CKT TRIPPED ON 186 A&B. NO TRIPPING AT ROHINI.
78	22.08.13	3:14	220KVBAWANA- ROHINI CKT-I	22.08.13	3:45	AT BWN CKT TRIPPED ON 186 A&B. NO TRIPPING AT ROHINI.
79	22.08.13	16:57	220KVBAWANA- ROHINI CKT-II	22.08.13	16:58	AT BAWANA CKT TRIPPED ON 186. NO TRIPPING AT ROHINI.
80	22.08.13	16:57	ROHINI 66kV ROHINI IV CKT-II	22.08.13	17:36	CKT TRIPPED ON VT FUSE FAILURE.
81	22.08.13	17:54	220KVBAWANA- ROHINI CKT-I	22.08.13	18:45	AT BWN CKT TRIPPED ON 186 A&B. NO TRIPPING AT ROHINI.
82	23.08.13	16:36	220KVBAWANA- ROHINI CKT-I	23.08.13	19:30	AT ROHINI CKT TRIPPED ON POLE DISCREPANCY. NO TRIPPING AT BAWANA.
83	24.08.13	16:57	ROHINI 66kV ROHINI IV CKT-I	22.08.13	17:36	CKT TRIPPED ON VT FUSE FAILURE.
84	24.08.13	12:10	BAWANA 400/220kV 315MVA ICT-V	01.09.13	20:04	ICT TRIPPED ON OIL SURGE RELAY INDICATION AT Y & B-PH, 86 A&B.
85	24.08.13	22:30	LODHI RD 33/11kV, 16MVA Tx-IV	24.08.13	23:42	TX TRIPPED ON OLTC BUCHHOLZ INDICATION, 86.
86	25.08.13	11:18	SUBZI MANDI 220/33kV 100MVA Tx-II	25.08.13	12:23	TX TRIPPED ON POLE DISCREPANCY.
87	25.08.13	14:52	GOPALPUR 33kV WAZIRABAD-II	25.08.13	21:13	CKT TRIPPED ON DISTANCE PROTECTION. Y-PH LINE ISOLATOR CLAMP TOWARD CT MELTED.
88	25.08.13	14:52	GOPALPUR 33kV WAZIRABAD-I	25.08.13	22:28	CKT TRIPPED ON O/C, R&B-PH, AUTO TRIP. R AND Y-PH COMMON CLAMP OF BUS ISOLATOR MELTED.
89	26.08.13	12:13	220kV GEETA COLONY- PATPARGANJ CKT -II	26.08.13	12:33	AT GEETA COLONY CKT TRIPPED ON D/P, Z-2, DIST-7.389 KM, 186. AT PPG CKT TRIPPED ON D/P, Z-1, DIST-1.476 KM ALL. KITE THREAD ENTANGLED B/W TOWER NO-359 AND 360 NEAR SMD OFFICE GEETA COLONY.
90	26.08.13	12:15	220kV GEETA COLONY- PATPARGANJ CKT-I	26.08.13	12:30	AT GEETA COLONY CKT TRIPPED ON D/P, Z-1, DIST-2.905 KM ALL PHASE. AT PPG CKT TRIPPED ON D/P, Z-1, DIST-0.9124 KM ALL PHASE. BIRDAGE REPORTED B/W TOWER NO-356 AND 357.
91	26.08.13	13:16	220kV PRAGATI - SARITA VIHAR CKT	26.08.13	13:22	AT PRAGATI CKT TRIPPED ON D/P, Z-1, DIST-8.146 KM, 186 AT SARITA VIHAR CKT TRIPPED ON D/P, A/R, 186 A&B
92	28.08.13	4:30	400kV Bamnauli-Jhatikara Ckt-II	28.08.13	0:00	AT BAMNAULI CKT TRIPPED ON D/P, Z-1, B-PH, 86-A&B, LA FLASH.
93	28.08.13	17:48	NAJAFGARH 66kV W/W NANGLOI CKT	28.08.13	17:22	CKT TRIPPED WITHOUT INDICATION. Y-PH JUMPER OF CKT DAMAGED. S/D AVAILED ALONG WITH 66KV BUS-2 FOR REPAIR OF CONDUCTOR. DURING S/D PERIOD 66KV NANGLOI CKT, 66KV JAFARPUR CKT-2 AND 20MVA TX-3 WAS OFF DUE TO NON AVAILABILITY OF BUS SELECTION
94	30.08.13	3:55	OKHLA 220/33kV 100MVA Tx-III	30.08.13	4:40	TX TRIPPED ON R-PH DIFFERENTIAL, 86. 33KV I/C-3 TRIPPED ON 86.
95	30.08.13	7:28	SARITA VIHAR 66/11kV, 20MVA Tx-II	30.08.13	7:35	11KV I/C-2 TRIPPED ON E/F.
96	31.08.13	18:35	220kV PRAGATI - SARITA VIHAR CKT	31.08.13	19:00	AT PRAGATI CKT TRIPPED ON D/P, Z-1, C-PH, DIST-8.265 KM, 186. AT SARITA VIHAR CKT TRIPPED ON D/P, ABC-PH, Z-1, DIST-2.488 KM, 186 A&B.
97	31.08.13	21:14	400kV Mundka-Jhatikara Ckt-II	31.08.13	22:08	AT MUNDKA CKT TRIPPED ON CB LOCK OUT.

20 DETAILS OF UNDER FREQUENCY RELAY OPERATIONS IN DELHI POWER SYSTEM DURING THE MONTH OF AUGUST 2013

DATE	S. N.	TIME		Name of Grid	NAME OF AFFECTED FEEDERS	MODE	LOAD RELIEF IN MW
		OUT	IN				
01.08.13	1	19:32	19:42	KHANJAWALA	11kV LOAD	MALFUNCTIONING	4
				NARAINA	11kV LOAD		
	2	19:55	20:05	SUBZI MANDI	11kV LOAD		1
08.08.13	3	14:50	15:06	SUBZI MANDI	11kV LOAD	DF/DT MODE	1
	4	19:24	19:26	GOPALPUR	11kV LOAD	DF/DT MODE	8
	5	19:24	19:26	KHANJAWALA	11kV LOAD	DF/DT MODE	2
	6	19:24	19:26	NARAINA	11kV LOAD	DF/DT MODE	2
28.08.13	7	19:10	19:14	NARAINA	11kV LOAD	MALFUNCTIONING	1
	8	11:58	12:05	SUBZI MANDI	11kV LOAD	MALFUNCTIONING	1
31.08.13	9	21:15	21:19	KASHMIRI GATE	JAMA MASJID	MALFUNCTIONING	9
	10	21:12	21:26	SHALIMAR BAGH	ASHOK VIHAR	MALFUNCTIONING	3
	11	21:12	21:23	SHALIMAR BAGH	ASHOK VIHAR	MALFUNCTIONING	6